

Part No.	Size	Weight
E4H	24"H x 20"W x 6.5"D	24 lbs.
E4H1	24"H x 20"W x 6.5"D	26 lbs.



Overview

HCLASS multi-purpose enclosures offer maximum flexibility, functionality and savings to access system designers. HCLASS enclosures are engineered to house FlexPower® power management boards alongside Honeywell Pro-Watch® access panels in one compact, secure system. The E4H1 can be configured with a door mount option for a maximum of eight doors with dual voltage distribution.

To prevent damage to system electronics, the backplate separates from the enclosure for access hardware mounting in the shop while wiring is pulled to the enclosure at the job site. Once configured, the backplate can be remounted for final ties and checkout.

Features

- Mounts LSP power and access hardware in a variety of combinations
- Removable backplate simplifies job installation
- Pre-engineered access mounting patterns saves installation time
 - ◆ Power and distribution boards are mounted and pre-wired
 - ◆ Access boards mount on provided threaded standoffs
- Mechanical upgrades
 - ◆ Removable door with quick disconnect grounding strap
 - ◆ Lockset and tamper switch provided
 - ◆ 6.5" enclosure depth to accommodate battery area
 - ◆ 16 Gauge steel with textured black finish
 - ◆ Multiple knockouts all four sides

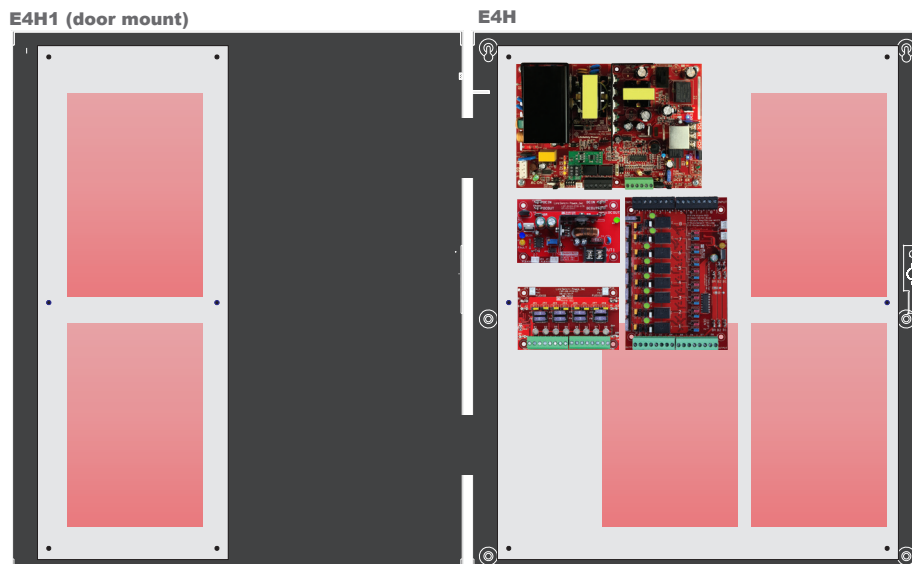
Custom Backplate Mounting System

Flexible Mounting Pattern

The E4H backplate is removable and Honeywell ProWatch panels and FlexPower modules in both single and dual voltage configurations. E4H1 adds a door backplate for the expansion of two extra ProWatch controllers.

FlexPower power supply(s) and distribution boards mount on threaded studs. Honeywell panels mount on supplied threaded standoffs.

Battery space beneath the enclosure backplate accommodates up to four (4) 12AH batteries.



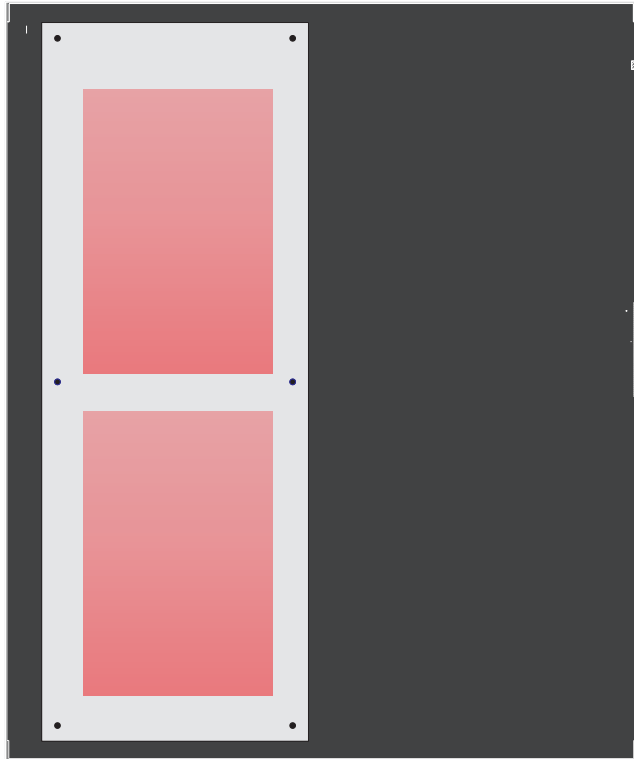
E4H/H1 Honeywell Mounting Guide

Slot Availability	E4H	E4H1
Controller	3	5
Reader	3	5
I/O	3	5

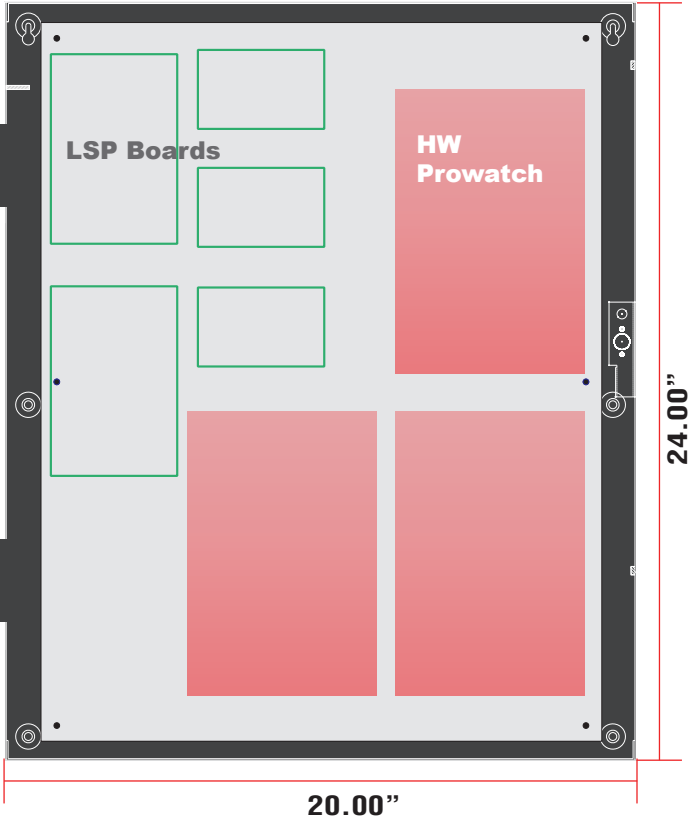
Enclosure Features

- ◆ **Custom Backplate**
 - Light weight aluminum with AC and battery slots to protect cables
 - LSP pre-wired power modules reduce installation time
 - Front side screw in standoffs simplifies panel installation
 - Wide wire management channels for panduit or tie wrap
- ◆ **Mechanical**
 - Pre-drilled mounting holes for easy field upgrades
 - 6.5" cabinet depth accommodates large battery sets
 - Removable door with "fast disconnect" ground strap
 - Multiple knockouts all four sides

E4H1 (door mount)

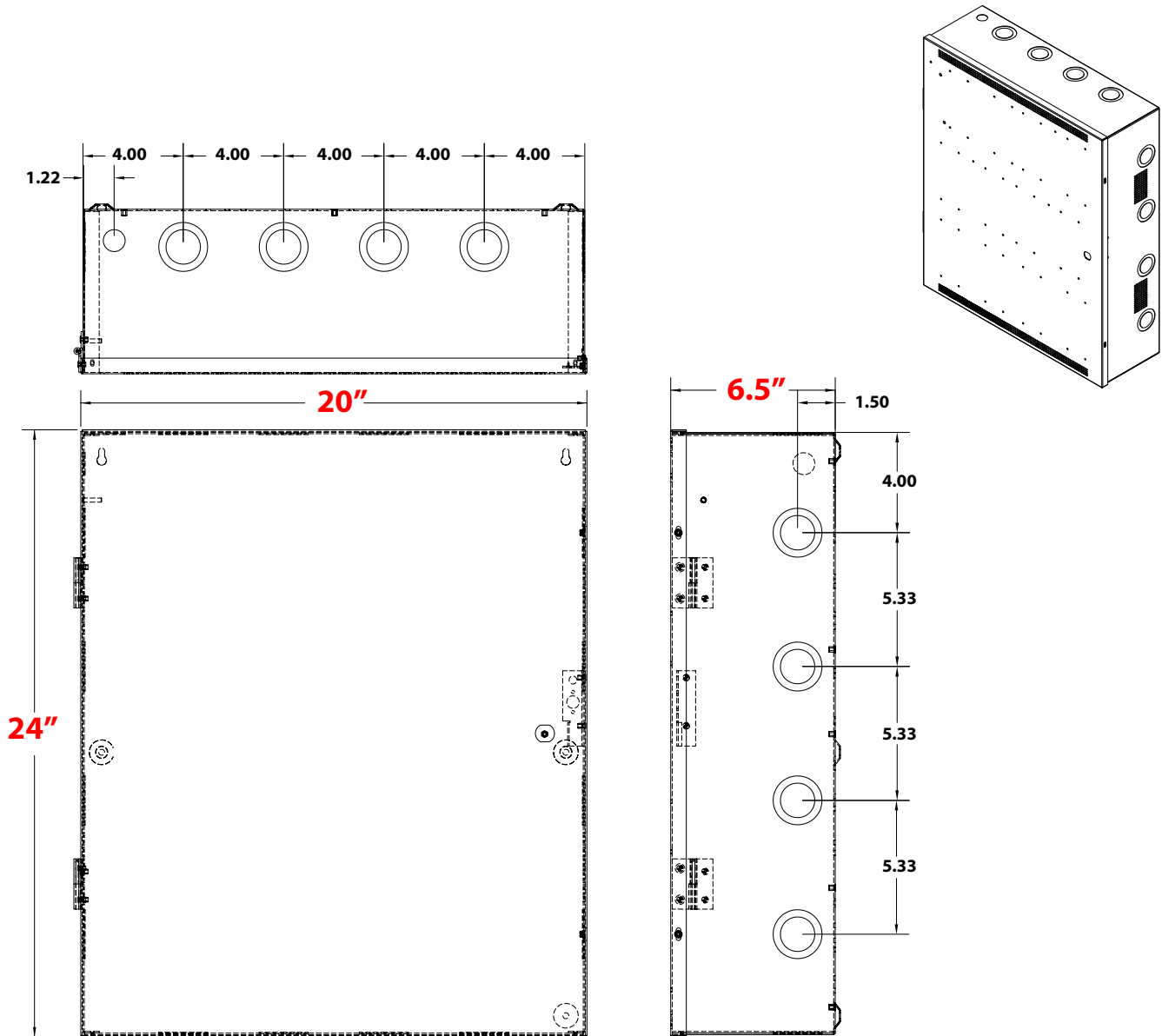


E4H



E4x Mechanical Specification

Enclosure Dimensions (H x W x D)
24.00" x 20.00" x 6.50" (61 x 51 x 16.5 cm)



LifeSafetyPower.com

(888) 577-2898
info1@LifeSafetyPower.com

Specifications subject to change without notice.

© 2025 LifeSafety Power. All rights reserved. LifeSafety Power and FlexPower are registered trademarks of LifeSafety Power. All other trademarks and copyrights are the property of their respective owners.
P01-1126_02 04/25

LifeSafety Power
10027 S. 51st Street, Suite 102
Phoenix, AZ 85044 USA