

LifeSafety Power®

---

**2024**

**POE PRODUCTS**



BITSTREAM Model Number	POE+ Ports	Universal Input	Integrated 48VDC Battery Charger	Remote port power cycle	Port disable on external trigger input	Email fault notification	All Ports IEEE802.3bt
BT500-8	8	✓	✓	✓	✓	✓	✓
BT500-16	16	✓	✓	✓	✓	✓	✓

**BT500 FEATURES**

**High Speed Network Compatible**  
 10 / 100 / 1000 network compatibility

**Fully Network Managed** View PoE output port voltage, current, power, and status locally or remotely. Disable or perform a timed reset of any or all ports.

**Universal AC Input** Accepts 85-265VAC input for worldwide operation on any power source - automatically.

**500W Total Output** High power output of 500W combined (maximum 90W per port - 802.3bt compatible).

**Built-in 48V SLA Battery Charger** Integrated battery charger provides dedicated backup for all connected PoE devices, reducing load on rack UPS. Battery monitoring provides battery voltage and connection status remotely.

**Front Panel Port Status Indication**  
 Dual color port LEDs indicate normal or fault conditions per zone. Green/Normal or Yellow/Fault

**Strong Cybersecurity Protection**  
 Configurable port settings, certificate selection, complex password settings, and other cybersecurity settings provide strong protection against cyber attack.

**User Control** Multiple user access levels with user activity log to track configuration changes and actions by user.

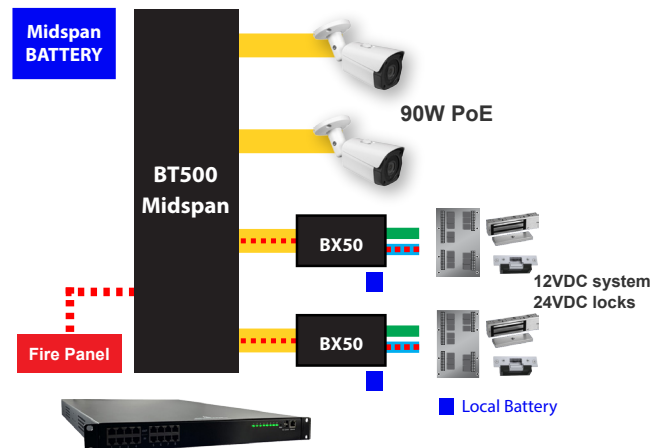
**Local Shutdown Input** Batch shutdown terminals accept a dry contact for local shutdown of selected outputs, independent of the fire alarm disconnect.

**MSM Enterprise Compatible** Monitor status of all LSP network connected devices and perform batch firmware updates through MSM Enterprise monitoring software.

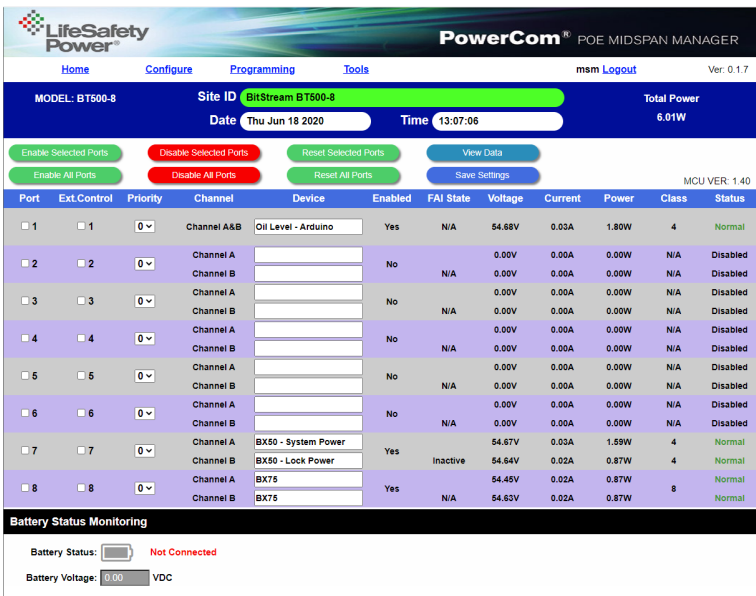
**BT500 - FIRE OVER ETHERNET™**

**FoE™** When paired with a BX50 PoE splitter, the BT500 can drop lock power on a fire alarm condition from a single fire alarm disconnect at the BT500. This eliminates the need to pull wiring for an FAI connection to each door, saving cost and simplifying installation.

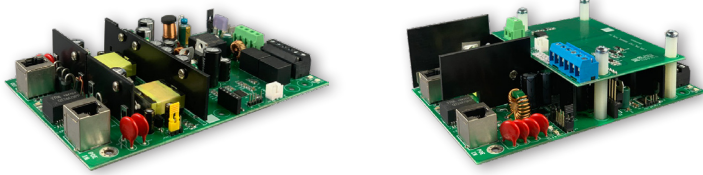
**BX50 Fire Over Ethernet™**



**BT500 DASHBOARD**



BITSTREAM™ **BX** series



**BX50 | 50W**

**BX75 | 75W**



BX Key Benefit
<b>Fire Alarm Disconnect</b> - local or centralized Fire Over Ethernet™
<b>Built-In Charger</b> - supports SLA or Lithium Iron Phosphate batteries
<b>OutSmart™</b> - visual voltage verification technology
<b>Built in low battery cutoff</b> - prevents deep discharge
<b>FlexPower Modularity</b> - Works with any LSP enclosure or accessory
<b>Separate Fault Relays</b> - Separate PoE and Battery Fault Relays

**MODEL BUILDER**

**BX 75 - C4 D8 NL4 E2**

BITSTREAM™  
POE ACCESS POWER

MODEL  
BX50 | BX75

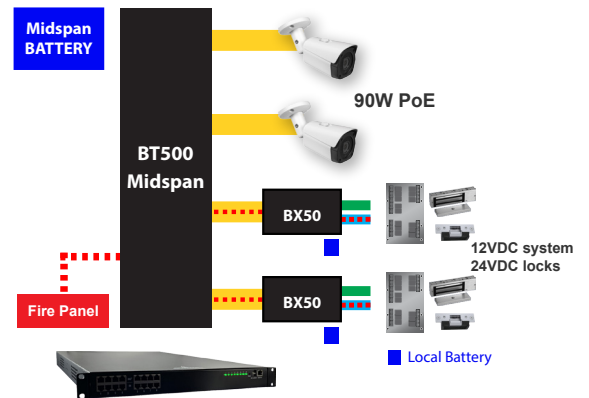
ENCLOSURE  
E5 - 8.5" x 11" x 3"  
E1 - 14" x 12" x 4.5"  
E2 - 20" x 16" x 4.5"

ACCESSORY BOARDS  
C4 - 4 controlled    D8 - 8 auxiliary  
C8 - 8 controlled    M8 - 8 managed  
NL4 - Network Module

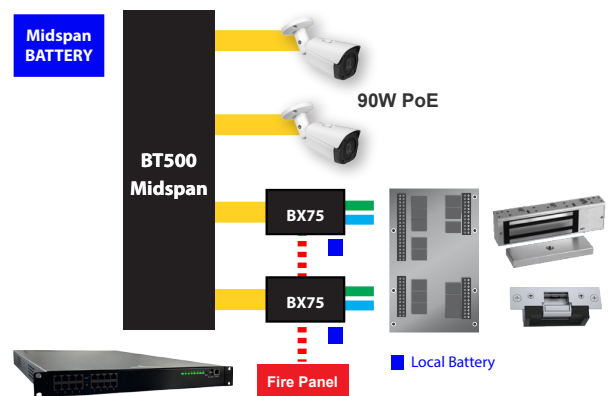


**APPLICATIONS**

**BX50 Fire Over Ethernet™**



**BX75 Local Fire Alarm Disconnect**





# LifeSafety Power®

## Corporate Headquarters

Phoenix, AZ 85044 USA  
888-577-2898 Toll Free  
[www.lifesafetypower.com](http://www.lifesafetypower.com)

## Agency Listings

- UL294, UL2610 | ULC S319
- CSA C22.2 #107.1
- FCC Part 15 Subpart B
- IEC 62368-1:2014, EN55032:2015, EN61000-3-2:2014
- EN61000-3-3:2013, EN55024:2010 +A1:2015
- CE | UKCA | BIS IS13252(Part1):2010 | NOM 001:2018 | RCM, SAA
- CSFM approved | ROHS 3 Leadfree