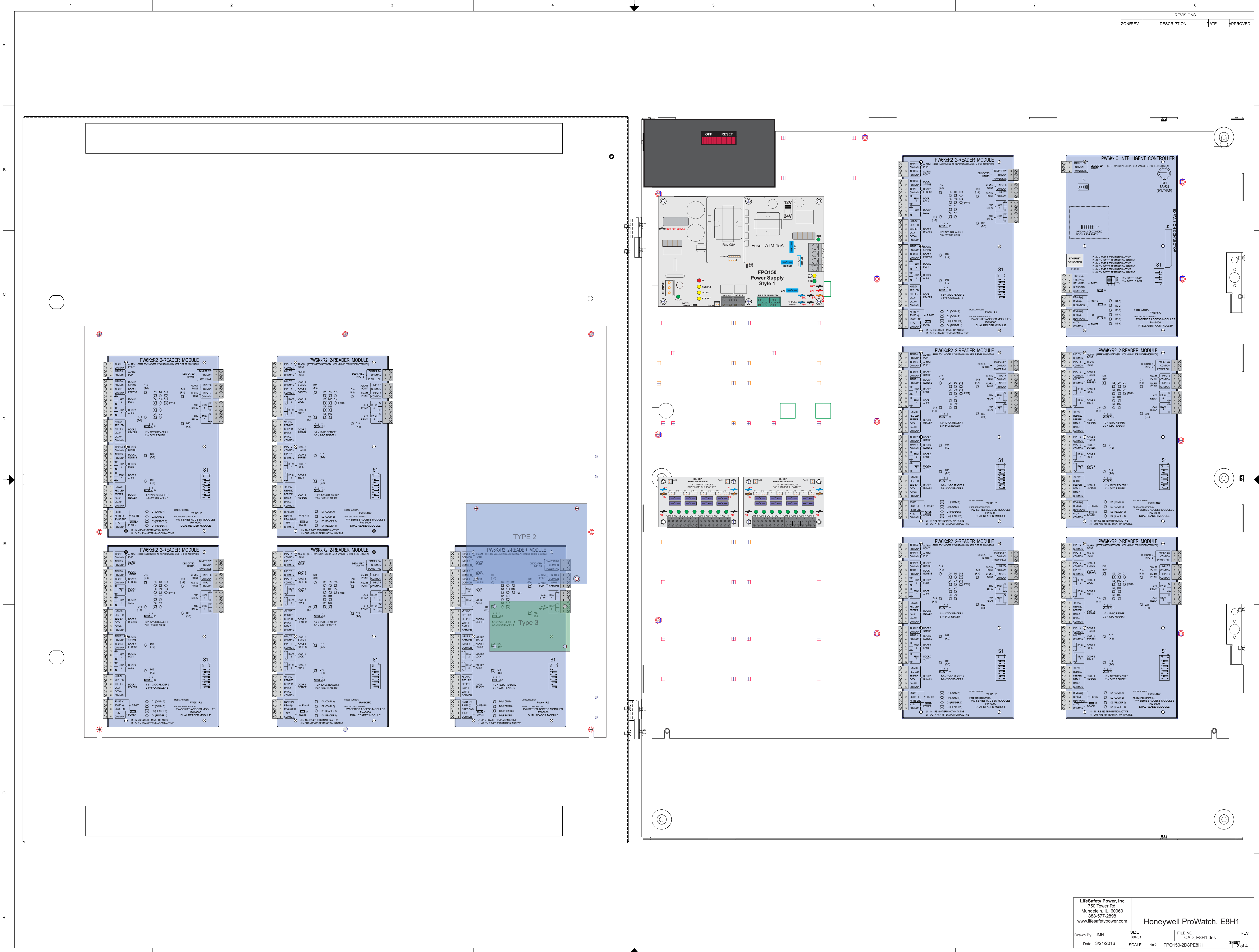


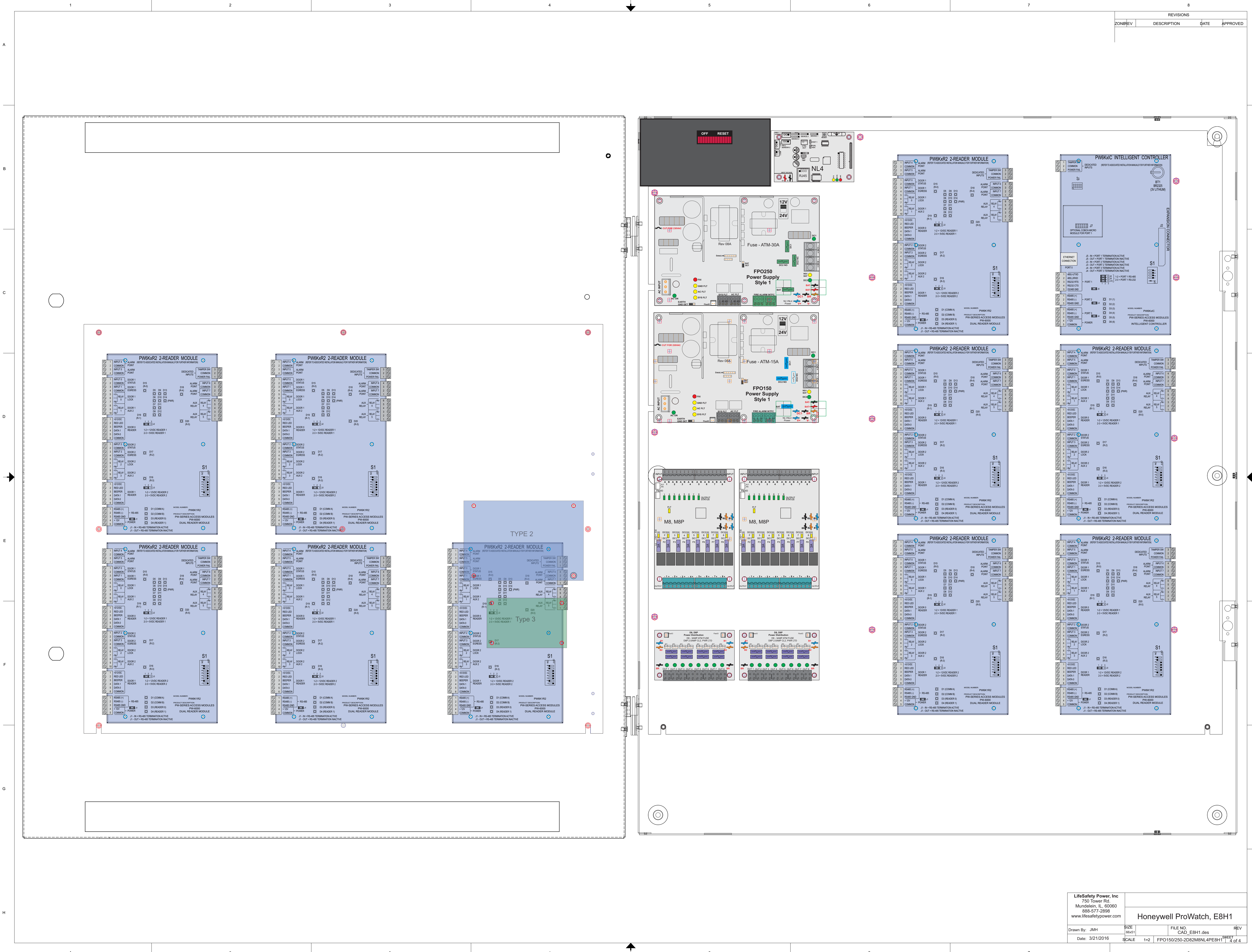
REVISIONS			
ZONE	REV	DESCRIPTION	DATE
		APPROVED	

Cabinet - 30" x 36" x 4.5"

LifeSafety Power, Inc. 750 Tower Rd. Mundelein, IL 60060 888-677-2696 www.lifesafetypower.com				Honeywell ProWatch, E8H1			
Drawn By: JMH		SIZE 66x51	FILE NO. CAD_E8H1.dwg	REV		SHEET	
Date: 3/21/2016		SCALE 1=2			1 of 4		







LifeSafety Power, Inc. 750 Tower Rd. Mundelein, IL 60060 888-677-0886 www.lifesafetypower.com		Honeywell ProWatch, E8H1	
Drawn By: JMH	SIZE 66x51	FILE NO. CAD_E8H1.dwg	REV
Date: 3/21/2016	SCALE 1=1	DATE 3/21/2016	SHEET 4 of 4