

Overview

BCLASS multi-purpose enclosures offer maximum flexibility, functionality and savings to access system designers. BCLASS enclosures are engineered to house FlexPower® power management boards alongside Brivo® access panels in one compact, secure system. The E4B can be configured for a maximum of six doors with dual voltage distribution.

To prevent damage to system electronics, the backplate separates from the enclosure for access hardware mounting in the shop while wiring is pulled to the enclosure at the job site. Once configured, the backplate can be remounted for final ties and checkout.

Features

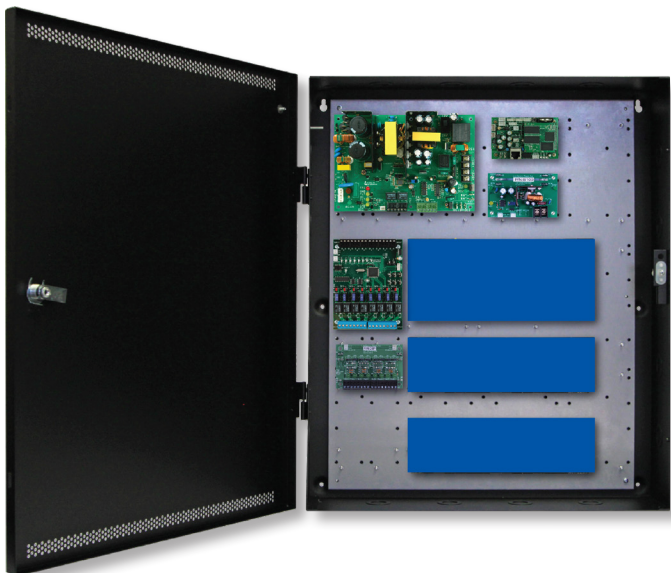
- Mounts LSP power and access hardware in a variety of combinations
- Removable backplate simplifies job installation
- Pre-engineered access mounting patterns saves installation time
 - ◆ Power and distribution boards are mounted and pre-wired
 - ◆ Access boards mount on provided threaded standoffs
- Mechanical upgrades
 - ◆ Removable door with quick disconnect grounding strap
 - ◆ Lockset and tamper switch provided
 - ◆ 6.5" enclosure depth to accommodate battery area
 - ◆ 16 Gauge steel with textured black finish
 - ◆ Multiple knockouts all four sides

Part No.	Door Count	Description	Weight
E4B	6 Doors	Enclosure with main backplate	26 lbs

E4 enclosure size: 24H x 20W x 6.5D



Flexible Backplate Mounting System



The E4B backplate is removable and mounts Brivo panels and LSP modules in both single and dual voltage configurations.

Power supply and distribution boards mount on threaded backplate studs and Brivo panels mount on supplied threaded standoffs.

6.5" enclosure depth accommodates 8AH batteries.

E4B BRIVO Mounting Guide

Brivo Access	Available Slots
Single Voltage	3
Dual Voltage	3

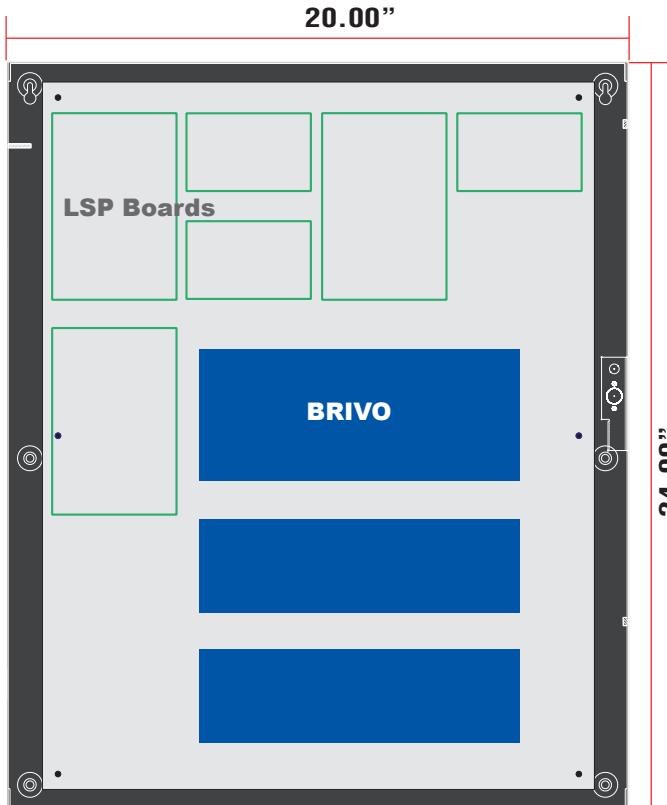
Enclosure Features

◆ **Custom Backplate**

- Light weight aluminum with AC and battery slots to protect cables
- LSP pre-wired power modules reduce installation time
- Front side screw in standoffs simplifies panel installation
- Wide wire management channels for panduit or tie wrap

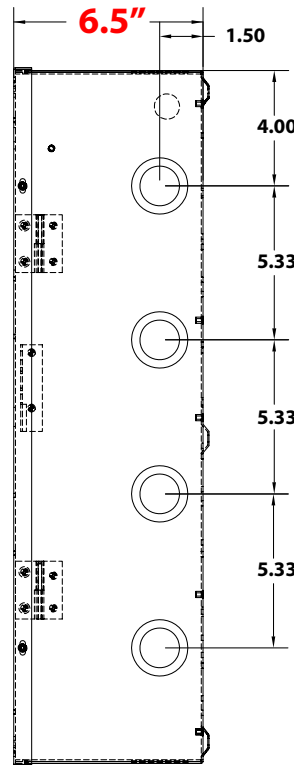
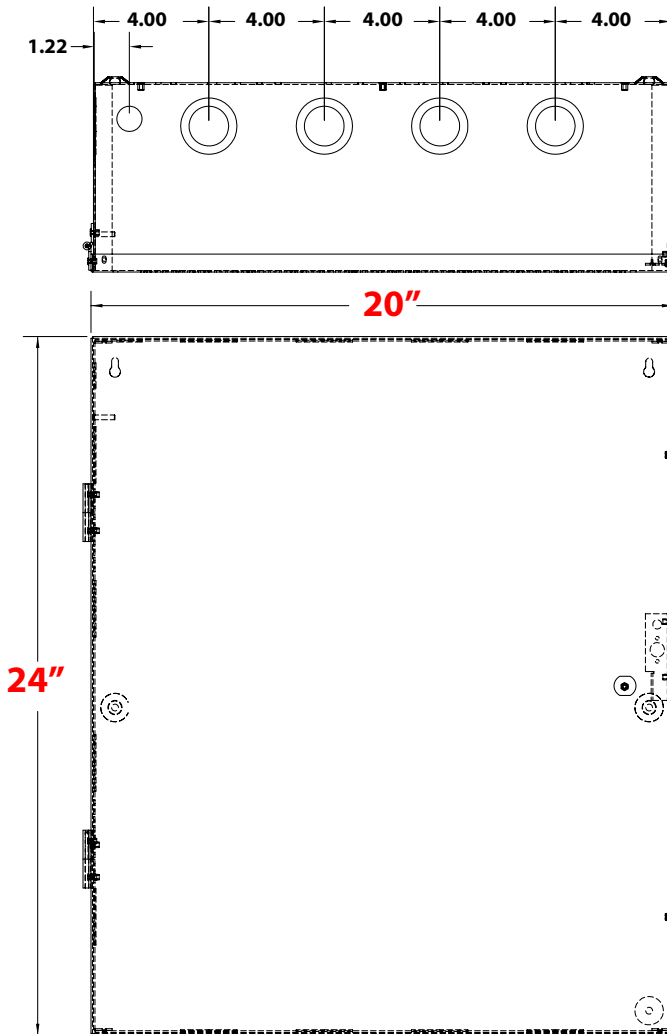
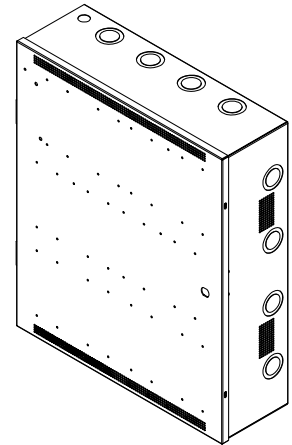
◆ **Mechanical**

- Protected AC cover with on/off circuit breaker for maintenance safety
- Pre-drilled mounting holes for easy field upgrades
- 6.5" cabinet depth accommodates large battery sets
- Removable door with "fast disconnect" ground strap
- Multiple knockouts all four sides



E4 Mechanical Specification

Enclosure Dimensions (H x W x D)
24.00" x 20.00" x 6.50" (61 x 51 x 16.5 cm)



lifesafetypower.com

(888) 577-2898
info@lifesafetypower.com

Specifications subject to change without notice.

© 2022 LifeSafety Power. All rights reserved. LifeSafety Power and FlexPower are registered trademarks of LifeSafety Power. All other trademarks and copyrights are the property of their respective owners.
P01-814A 06/22

LifeSafety Power
10027 S. 51st Street, Suite 102
Phoenix, AZ 85044 USA