

BITSTREAM®

power • data • single-point fire interface



Lifetime Warranty



Overview

BitStream rack mount midspan injectors provide power and pass data to 8 or 16 PoE compliant devices. All models provide 500 watts total power with up to 90 watts per port (802.3bt compliant) and feature a universal AC input for global deployment.

Proprietary single-point fire interface™ (SFI) provides fire alarm disconnect through a central connection without additional wiring to each door when using the BX50 splitter.

Integrated 48V SLA battery charger provides economic backup power to all connected PoE devices on an AC failure without placing additional loading on the rack UPS. BitStream midspans are 19" rack mountable and 1U in height.

Features and Benefits

Fire Alarm Disconnect - Single Point Fire Interface (with BX50)
Central Battery Backup - Provides backup to all connected devices Built-in battery charger for central backup Auto switchover to battery with zero transfer time
Built-In Charger - Supports 48V SLA battery sets
Network Managed - Port status/reset, battery status, email alerts
Universal AC Input - Works with any 100-240VAC power source
High Power 802.3bt Compatible - Up to 90W per port, 500W total
Enhanced Cybersecurity - Provides strong cybersecurity protection

Family Specifications

Input:

- Meets EU Limits for Harmonic Current Emissions

Remote Monitoring & Control:

- Email or SNMP alerts on faults
- Remote port disable / reset
- Battery voltage, status and alerts
- 1000 event history log
- Monitor voltage, current, power per output

Fire Alarm Disconnect (compatible with BX50):

- Single-point Fire Interface™ reduces & simplifies wiring
- DC voltage: 9 to 28VDC, 3 to 15mA
- Dry contact NO/NC
- Optional Fire Alarm latching

LED visual indicators:

- Individual port status (Dual color - Green/OK, Yellow/Fault)
- AC Power indicator on power switch

Agency Approvals:

- UL294
- CAN/ULC 60839-11-1
- Meets IEC61000-4-5 surge immunity for Class 4, 4kV
- ROHS

Electrical Specifications

Input	90-265VAC, 50/60Hz
Total Max Output	500W
Power Factor	> 0.9 and Input Current THD < 10%
Max Output Per Port	90W (802.3bt)
Number of Ports	8 or 16, fully managed
Network Speed	10 / 100 / 1000
Fire Alarm Disconnect**	Yes
Battery Backup	Yes
Battery Type	48V Sealed Lead Acid (SLA)
System BTU/Hr	170
Full Load Efficiency	90
Operating Temperature	-4 to +122F (-20 to +50C)
Dimensions (inches)	1.7 x 19 x 15.5 (1U)
Weight (pounds)	19 lbs

** Note: BT Single-point Fire Interface (SFI) function pairs with BX50 splitter

Ordering

Model No*	Description	Enclosure Size
BT500-8R	8 Port, 500W PoE Midspan, BT compatible	1.7H x 19W x 15.5D
BT500-16R	16 Port, 500W PoE Midspan, BT compatible	1.7H x 19W x 15.5D

BT500 High Power PoE Midspan

500W / 8 or 16 Port / FAI

BT500 FEATURES

High Speed Network Compatible 10 / 100 / 1000 network compatibility.

Fully Network Managed View PoE output port voltage, current, power, and status locally or remotely. Disable or perform a timed reset of any or all ports.

Universal AC Input Accepts 85-265VAC input for worldwide operation on any power source - automatically.

500W Total Output High power output of 500W combined (maximum 90W per port - 802.3bt compatible).

Built-in 48V SLA Battery Charger Integrated battery charger provides dedicated backup for all connected PoE devices, reducing load on rack UPS. Battery monitoring provides battery voltage and connection status remotely.

Front Panel Port Status Indication Dual color port LEDs indicate normal or fault conditions per zone. Green/Normal or Yellow/Fault.

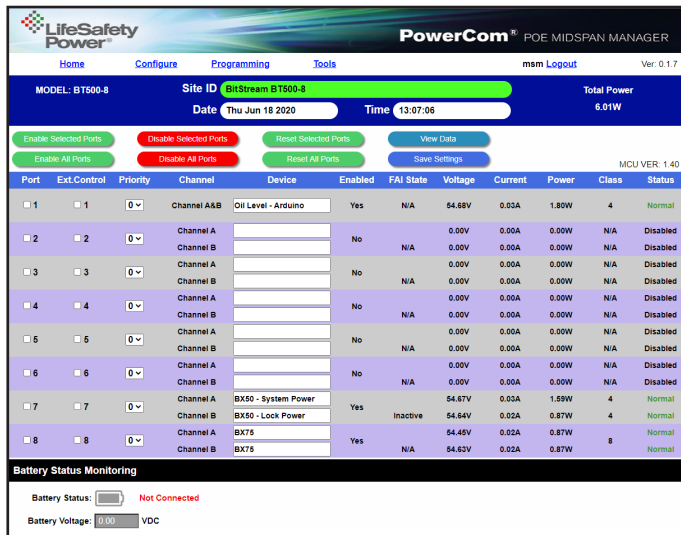
Strong Cybersecurity Protection Configurable port settings, certificate selection, complex password settings, and other cybersecurity settings provide strong protection against cyber attack.

User Control Multiple user access levels with user activity log to track configuration changes and actions by user.

Local Shutdown Input Batch shutdown terminals accept a dry contact for local shutdown of selected outputs, independent of the fire alarm disconnect.

MSM Enterprise Compatible Monitor status of all LSP network connected devices and perform batch firmware updates through MSM Enterprise monitoring software.

BT500 DASHBOARD



LifeSafetyPower.com

(888) 577-2898
info1@LifeSafetyPower.com

Specifications subject to change without notice.

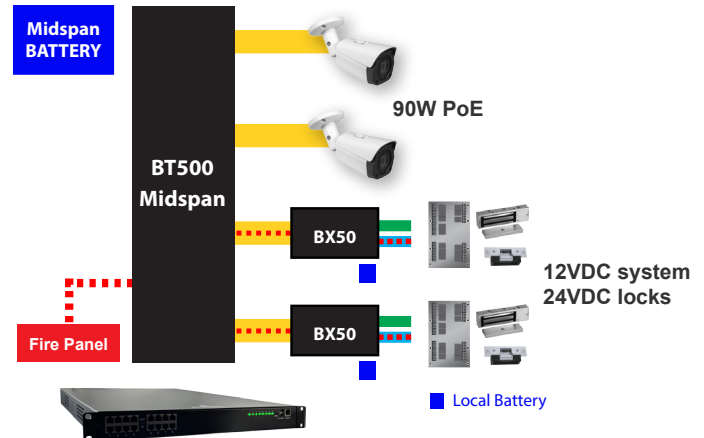
© 2025 LifeSafety Power. All rights reserved. LifeSafety Power and FlexPower are registered trademarks of LifeSafety Power. All other trademarks and copyrights are the property of their respective owners.
P01-1116_3 04/25

LifeSafety Power
10027 S. 51st Street, Suite 102
Phoenix, AZ 85044 USA

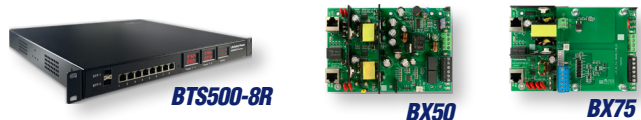
SFI SINGLE-POINT FIRE INTERFACE

Fire Safety When paired with a BX50 PoE splitter, the BTS can drop lock power on a fire alarm condition from a single fire alarm disconnect at the BTS. This eliminates the need to pull wiring for an FAI connection to each door, saving cost and simplifying installation.

BX50 Proprietary Single-point Fire Interface



BITSTREAM FAMILY



BTS500 PoE Endspan Switch
8 PoE network devices
500W total power, 90W per port
Local fire alarm disconnect for UL294 compliance

BX50 PoE Extractor Splitter
BTS500 required for use
50W at 12 or 24VDC
BT & BTS Single Point Fire Interface mode compatible

BX75 PoE Extractor Splitter
Universal compatibility with 802.3bt endspan switches
75W at 12 or 24VDC
Local fire alarm disconnect for UL294 compliance

See BitStream Switch and BX Series datasheets for more information.

IMPORTANT

All information, including illustrations, is believed to be reliable. Users, however, should independently evaluate the suitability of each product for their particular application. LifeSafety Power makes no warranties as to the accuracy or completeness of the information, and disclaims any liability regarding its use. LifeSafety Power's only obligations are those in the LifeSafety Power Standard Terms and Conditions of Sale for this product, and in no case will LifeSafety Power or its distributors be liable for any incidental, indirect, or consequential damages arising from the sale, resale, use, or misuse of the product. Specifications are subject to change without notice. In addition, LifeSafety Power reserves the right to make changes—without notification to Buyer—to processing or materials that do not affect compliance with any applicable specification.