

# VANTAGE™



## ELECTRICAL RATINGS

Parameter	Rating
Input Voltage	120 / 208 / 230VAC 50/60Hz
Input Current (max)	3.70 Amps
Main Output	6 Amps at 12 or 24V DC
Aux Output	1.5A Class II Power Limited
Maximum Charge Current	1.5 Amps
Low Power Disconnect	at 70% of battery voltage
System BTU/Hr	44 (12V)   62 (24V)
Operating Temperature	-4 to +122F (-20 to +50C)
Efficiency	83% 120VAC 60Hz In, Full Load
Dimensions / Weight	8.25L" x 5.5W" x 2.5H"   2.00 lbs

### Agency Approvals:

- UL294, UL603, UL1076
- ULC S318, S319
- CSA C22.2#107.1
- CSA 22.2 #60950
- BIS, UKCA, RCM, SAA
- ROHS Leadfree



## OVERVIEW

FlexPower Vantage smart power supply/chargers offer enhanced performance with these standard features:

- **120/230VAC input** cut jumper for 230VAC
- **Built in Fire Alarm disconnect** on a per output basis
- **Low battery cutoff** protects batteries from deep discharge
- **Dedicated fast charger** prolongs battery life
- **Outsmart** Bicolor output LED (12V/Green, 24V/Blue)
- **Locksafe** tight regulation provides longterm lock protection
- **Dual outputs** main and auxiliary rated 1.5A continuous
- **Network ready** with optional NetLink module
  - Monitor ac line voltage & other parameters in NetLink dashboard
  - Remote test batteries
- **Lifetime Warranty**
  - LifeSafety Power's quality commitment

## MODELS

FPV6 120VAC Input

FPV6/E 208/230VAC input

## SPECIFICATIONS

### Input

- 120/208/230VAC, 50/60Hz
- 3.70 amp maximum

### Outputs

- 6A @ 12 or 24VDC
- Main output continuous or switched on FAI Input
- Auxiliary 1.5 Amp output Class II power limited
- Overload & short circuit protection with auto-restart

### Battery Backup:

- Built-in 1.5 Amp Fast Charger
- Instant auto-switch to battery on AC loss

### Supervision:

- AC fail, Battery fail, System fault (form "C")
- Low power shutdown when battery voltage too low

### Fire Alarm Disconnect Activation:

- DC voltage: 9 to 33VDC, 3 to 15mA
- Dry contact NO/NC
- Optional Fire Alarm latching

### Visual indicators:

- AC On, DC output, Fire Alarm activation

# Vantage Series FPV6 Smart Power Supply/Charger Board

6 Amps @ 12 or 24VDC | FAI | Network Ready | Multi-Output | UL/CUL

## Other FPV6 configurations

see datasheet FPV6-R8E1



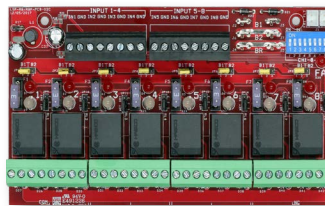
### FPV6-E1 (Standard Power)

- Network ready power supply/charger
- Locksafe™ regulated lock output voltage
- Dedicated fast charger / Low battery cutoff
- Output select: continuous or failsafe on fire alarm
- Auxiliary output 1.5A class 2 power limited
- Enclosure compatible with LSP accessory modules
- Lockset standard, tamper switch option

### FPV6-R8E1 (Access)

- All Standard Power features plus
- Eight (8) lock outputs with trigger inputs and fire alarm control. Each output selectable for continuous, failsafe or failsecure
- Relay isolation

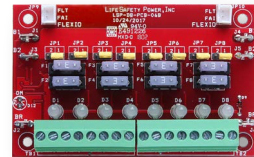
R8



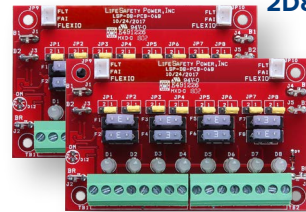
### FPV6-D8E1 (Multi-Output)

- All FPV standard power features plus:
- 8 (D8) auxiliary outputs
- 16 (2D8) auxiliary outputs

D8



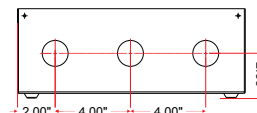
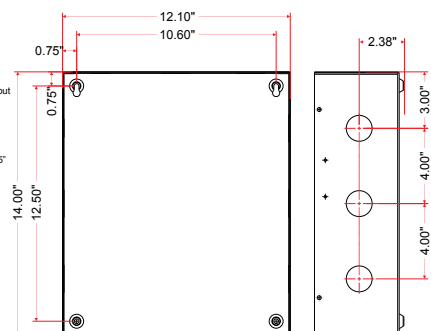
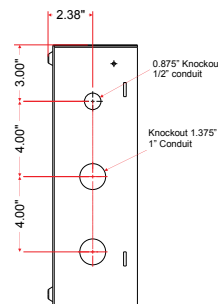
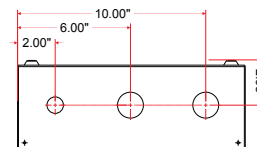
2D8



## ENCLOSURE DIMENSIONS

14"H x 12"W x 4.5"D (35.6 x 30.5 x 11.4 cm)

- Includes lock set
- For tamper switch, order pn: A05-304



**LifeSafetyPower.com**

(888) 577-2898  
info@lifesafetypower.com

Specifications subject to change without notice.

© 2025 LifeSafety Power Inc. All rights reserved. LifeSafety Power, Net-Link, Vantage are trademarks of LifeSafety Power, Inc. All other trademarks and copyrights are the property of their respective owners.

P01-934\_02 04/25

**LifeSafety Power LLC**  
10027 S. 51st Street, Suite 102  
Phoenix, AZ 85044 USA