

### Overview

XCLASS multi-purpose enclosures offer maximum flexibility, functionality and savings to access system designers. XCLASS enclosures are engineered to house FlexPower® power management boards alongside AXIS™ access hardware in one compact, secure UL294 listed system.

To prevent damage to system electronics, the backplate separates from the enclosure for access hardware mounting in the shop while wiring is pulled to the enclosure at the job site. Once configured, the backplate can be remounted for final ties and checkout.

### Features

- Mounts LSP power and access hardware in a variety of combinations
- Removable backplate simplifies job installation
- Pre-engineered access mounting patterns saves installation time
  - ◆ 1210-B and 1610-B controllers mount on provided standoffs
- Mechanical upgrades
  - ◆ Removable door with quick disconnect grounding strap
  - ◆ Lockset and tamper switch provided
  - ◆ 4.5" enclosure depth to accommodate battery area
  - ◆ 16 Gauge steel with textured black finish
  - ◆ Multiple knockouts all four sides



## AXIS Backplate System



### Flexible Mounting Pattern

The E2X and E4X backplates are designed with a unique AXIS mounting pattern to provide the installer with a configuration mechanism capable of supporting 1210-B and 1610-B controllers in an extremely efficient manner for maximum door count.

The backplate is removable and mounts controllers and LSP modules in both single and dual voltage configurations.

The 4.50" cabinet depth allows for various battery sizes and capacities based on standby time required.

Model No.	Height x Width x Depth	Weight
E4X	24 x 20 x 6.5" (610 x 510 x 165 mm)	25 lbs. (14.0 kg)
E2X	20 x 16 x 4.5" (510 x 410 x 120 mm)	18 lbs. (8.0 kg)

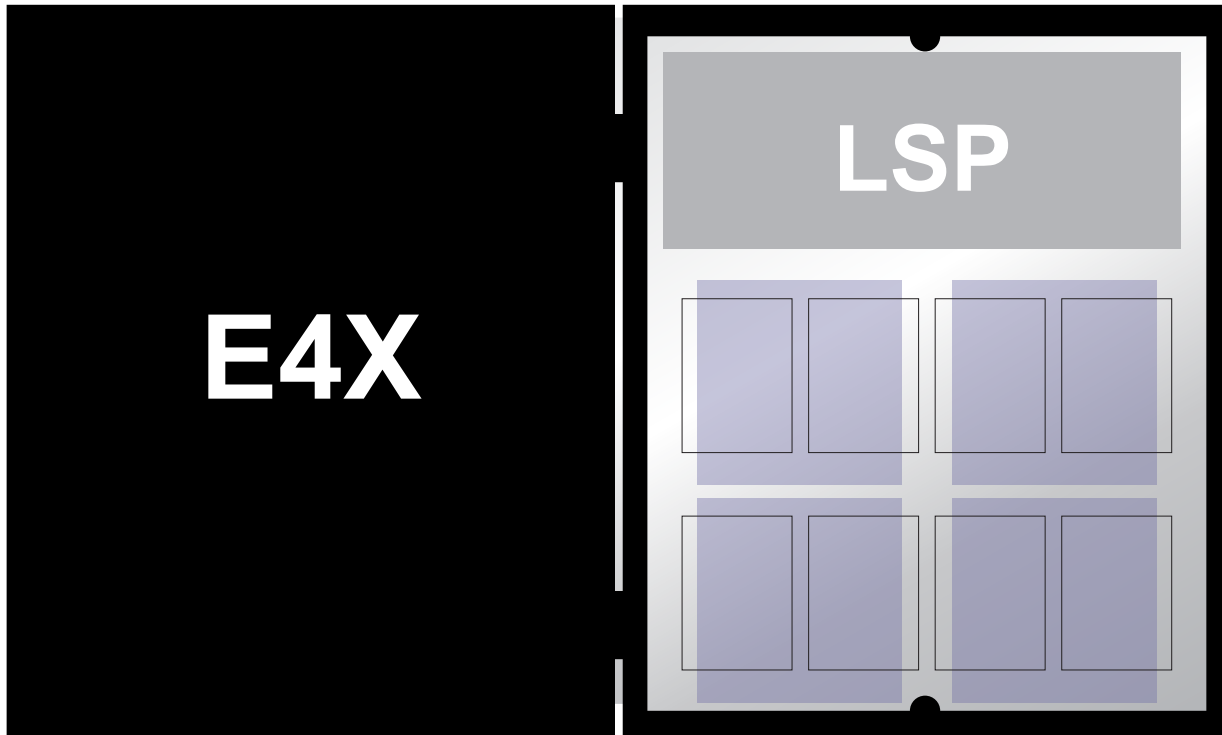
*All enclosures come with lock and tamper switch*

**E2X, E4X AXIS Mounting Guide**

ENCLOSURE	E4X	E2X
AXIS Controller		
1210-B	8 Slots	4 Slots
1610-B	4 Slots	2 Slots

**Enclosure Features**

- ◆ Custom Backplate
  - LSP power modules pre-wired in top area
  - E2X holds up to four 1210-B controllers or up to two 1610-B controllers
  - E4X holds up to eight 1210-B controllers or up to four 1610-B controllers
- ◆ Mechanical
  - 4.5" cabinet depth
  - Removable door with "fast disconnect" ground strap
  - Multiple knockouts all four sides
  - Network module mounting holes for field upgrade

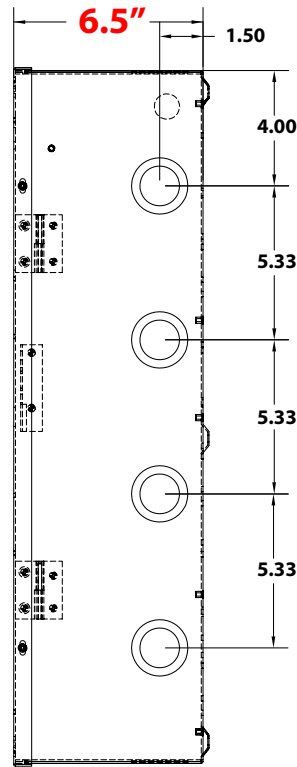
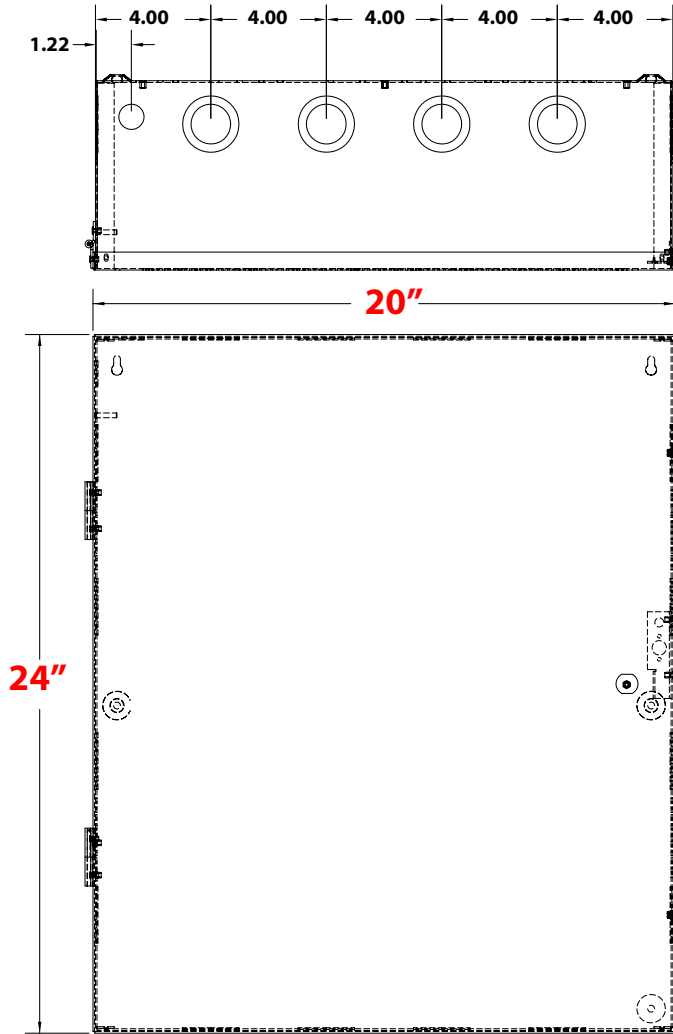
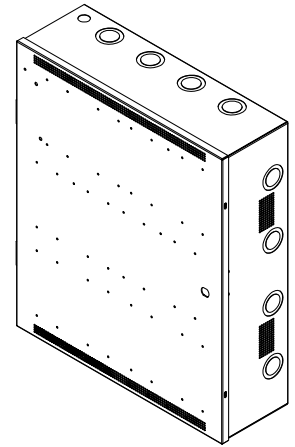


**Pattern Guide**



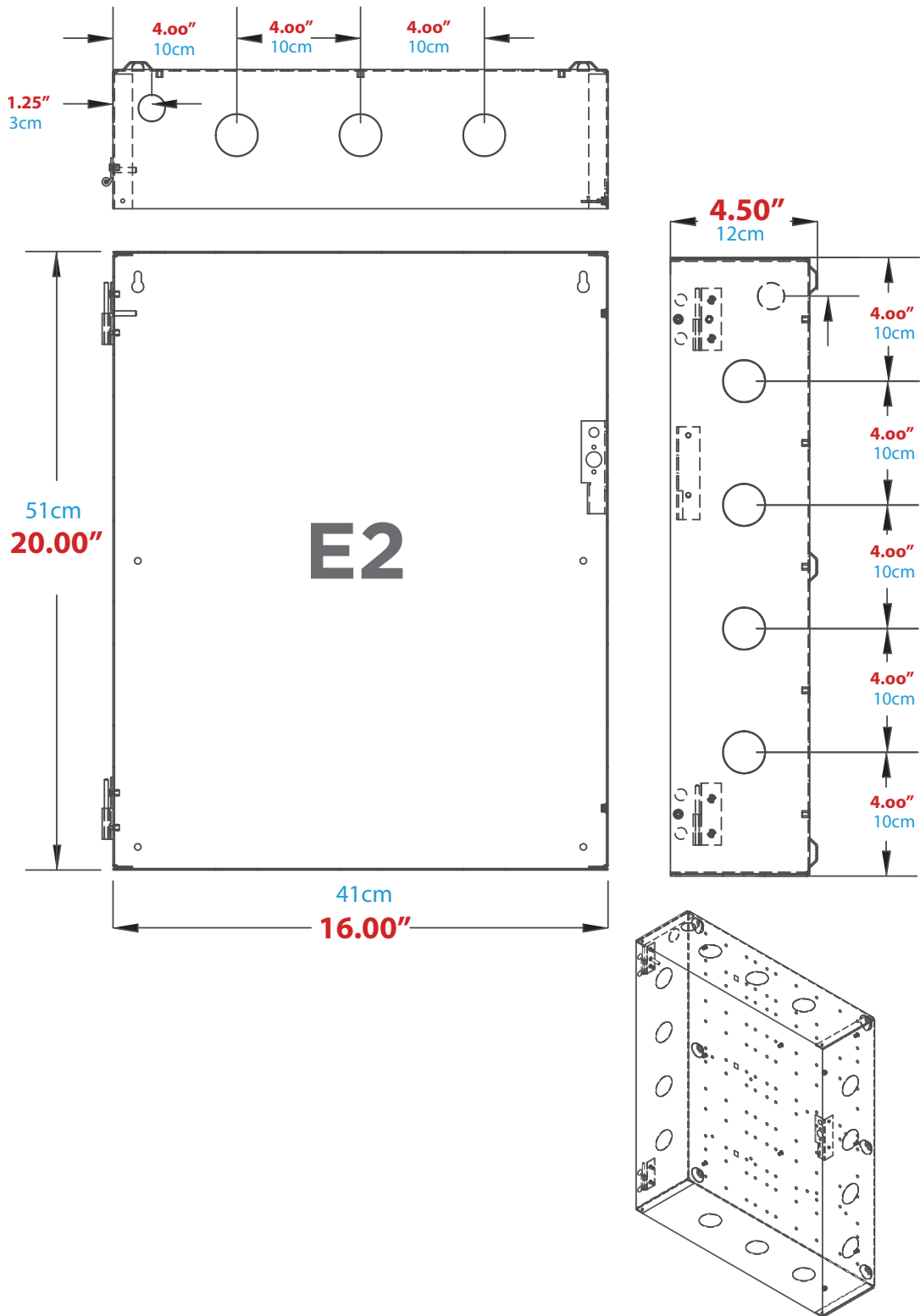
## E4X Enclosure Dimensions (H x W x D)

24.00" x 20.00" x 6.50" (61 x 51 x 16.5 cm)



## E2X Enclosure Dimensions (H x W x D)

20.00" x 16.00" x 4.50" (51 x 41 x 11.4 cm)



**[lifesafetypower.com](http://lifesafetypower.com)**

(888) 577-2898  
[info1@lifesafetypower.com](mailto:info1@lifesafetypower.com)

Specifications subject to change without notice.

© 2023 LifeSafety Power. All rights reserved. LifeSafety Power and FlexPower are registered trademarks of LifeSafety Power. All other trademarks and copyrights are the property of their respective owners.

Mercury Security is a registered trademark of Mercury Security.

P01-470A 11/23

**LifeSafety Power**

10027 S. 51st Street, Suite 102  
Phoenix, AZ 85044 USA