

WHAT YOU POWER IS IMPORTANT, HOW YOU POWER IT, IS CRITICAL.

Welcome to the new world of Intelligent power.

LifeSafety Power is the preeminent manufacturer of intelligent power management solutions. Our focus is to provide the most flexible, predictive and proactive power systems for access control, intrusion and surveillance in the industry.

Corporate Overview

2024



FLEXPOWER®

**LifeSafety Power: the global leader
in intelligent, networked power.**

We've powered up
a **new standard** of
performance.

FlexPower is our award winning product family, that sets a new standard of performance for lifesafety power equipment. FlexPower uses a unique modular design that allows for many system configurations such as single, dual or multi voltage outputs and power distribution, control, or signaling, fire alarm interface with failsafe, failsecure lock control, plus network communication, all of which are standard in one advanced multi-listed system platform.

Modular Mix and Match Flexibility

Industry Leading Innovation

Remote Battery Monitoring

Dual Buss Architecture

Hardened Cybersecurity

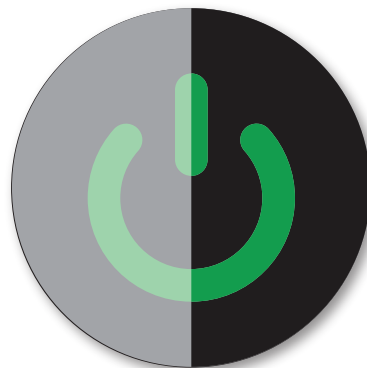
Power & Access Integration

Redundant Power Solutions

Network Security and Encryption

ProWire® Factory Wiring Service

Integrations with Industry Leaders



Industry Validation

LifeSafety Power OEM Partnerships



Software House

LENEL·S2



Honeywell



AccessNsite®



ASSA ABLOY



brivo®

cbord®



PRO

Kantech

MAXESS

Mercury™

openpath

ORION
ENTRANCE CONTROL, INC.

Paxton

SALTO



SIEMENS

TRANSACT

AVIGILON™



Innovation

Redefining What Access Power Can Be

Network Interface Option

Power supply programming, remote monitoring, reporting, and control

Smart Charger

Recharges batteries 50% faster
Monitors charge to prolong battery life

12/24V Select

TruWatt® design
Double current 12V setting

Field selectable input range

120VAC or 208-230VAC

OutSmart™

Color changing output LED
Visual voltage verification
blue 24V | green 12V

Polarized AC Disconnect

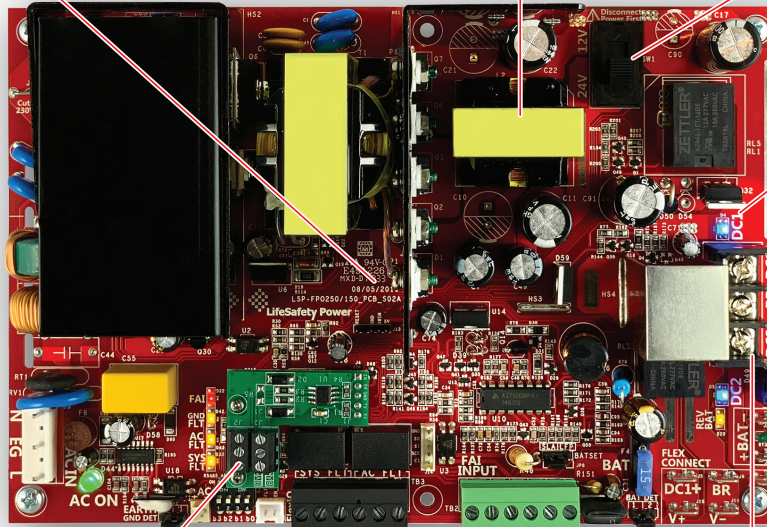
Safety feature for field servicing

Multiple DC Outputs

with TruWatt® power that follows Ohms Law

Standard Fuses

ATM style, easy to find and service



RS485 Communication

Remotely monitor up to 12 LSP power supplies through a single IP drop

Fault Reporting | Fire Alarm Interface

Programmable AC & system fault alert delays
Fire interface to unlock egress doors or operate door holders directly from the power supply

Output Control

Manage lock release through FAI drop
Reset outputs with network option



UL294, UL2610 | ULC S319 | CSA C22.2 #107.1 | FCC Part 15 | CSFM

IEC 62368-1:2014, EN55032:2015, EN61000-3-2:2014

EN61000-3-3:2013, EN55024:2010 +A1:2015

UL | CE | UKCA | BIS | NOM | RCM | PSE

Information

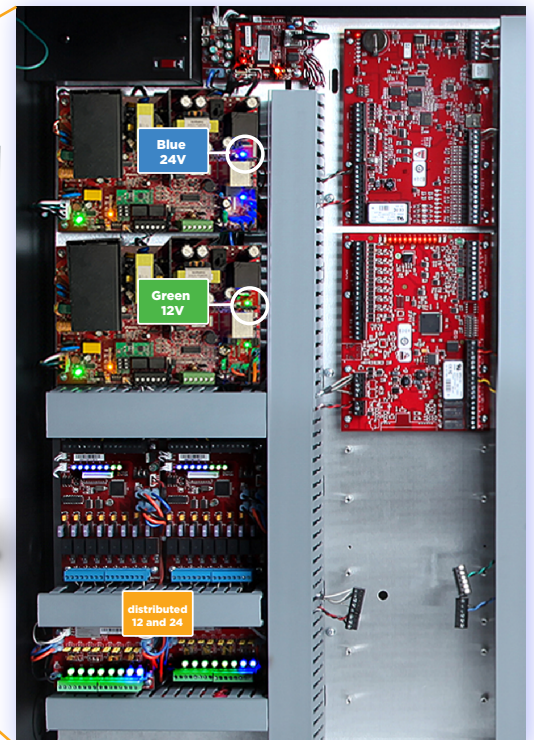
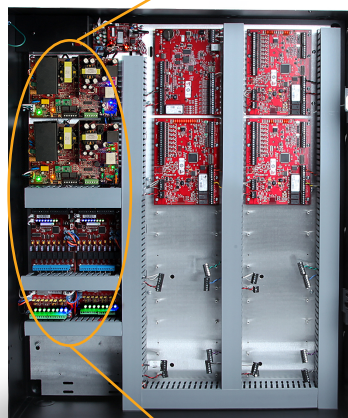
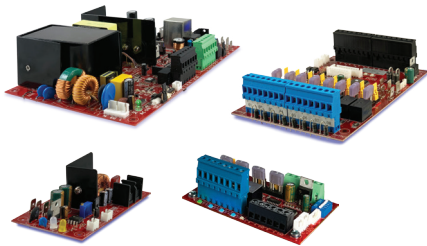
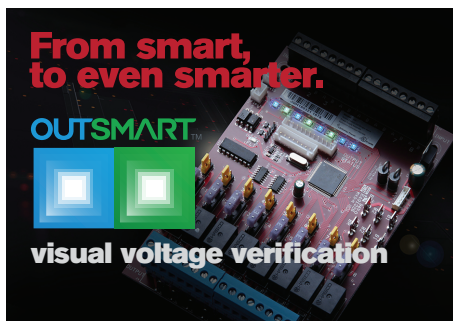
Always-on, Always-ready, Always-reliable Power

**It's
not a
power
supply.**

**It's a
vault of
information.**



- ▶ Power - Fault Condition
- ▶ Batteries - Charge State
- ▶ Locks - Predictive Lifecycle
- ▶ Data - Performance Analytics



Power & Distribution

- ▶ Bicolor Output LEDs
- ▶ 24V/Blue, 12V/Green

Why Power Management?

They say knowledge is power. But for today's most critical safety and security systems, it's really the other way around. We drive innovation in power management, with predictive, reliable and flexible solutions that facilitate real time analytics for more functional and secure environmental management. Ideal for conditions where smart power management is essential, our technology monitors the security infrastructure proactively -- spotting problems before they occur for maximum system uptime.



Powerful Proactive Analytics - The industry's first proactive analytics-based patented technology that identifies and prevents potential power problems to critical security systems before they fail. LSP technology proactively delivers detailed analytics that help manage your system to a healthy optimal performance.

Intelligent Predictive Management - Providing intelligent predictive power management either globally, locally or to each connected device. The patented technology increases the integrity of your power and reduces the need for onsite technicians.



Reliable, High Performance Solutions

that when customers invest in LifeSafety Power they are receiving the absolute best-in-class, reliable and high performing intelligent products and solutions on the market.

Our commitment is in delivering value and service that enable customers to increase efficiencies, reduce costs and proactively manage the power to critical systems and devices.

We are committed to ensuring that our focus is on supporting you, our customers and partners, with a wide array of innovative and reliable products, enhanced by a network of partnerships and alliances. This commitment also means that all products are backed by the industry's strongest delivery and response time plus product warranties and agency certifications.

LSP is proud to be the leader in innovative, intelligent power managed solutions, that are used to power critical facilities for millions of customers around the world.

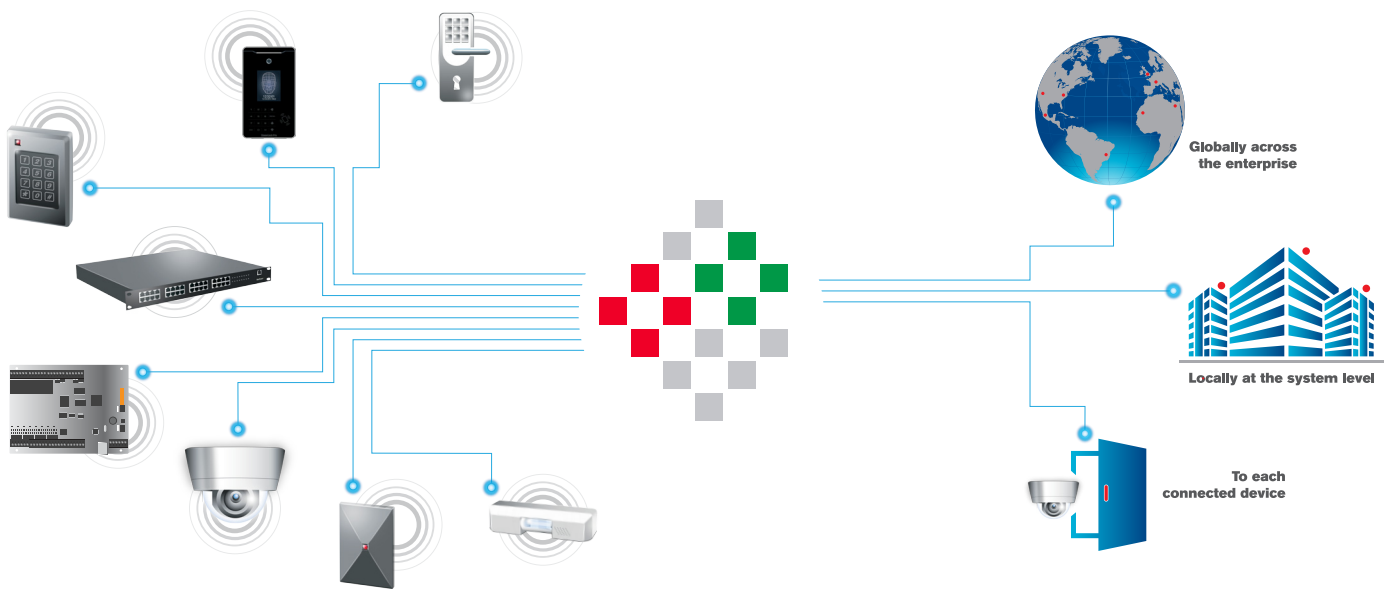


Next generation power management

Flexible, Integrated, Intelligent

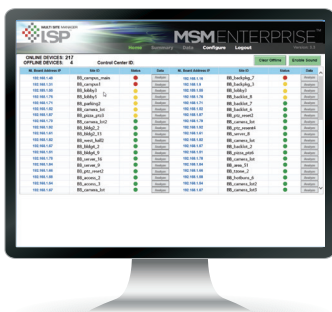


LSP is the heart of a secure power system



From monitoring your global infrastructure, to monitoring the security system that opens the doors just outside your office, you can get the same level of detailed, proactive information at any level, all from one powerful platform. From specific devices, to local systems, to worldwide enterprises, managed power is essential to keeping your environment secure.

Monitor the enterprise



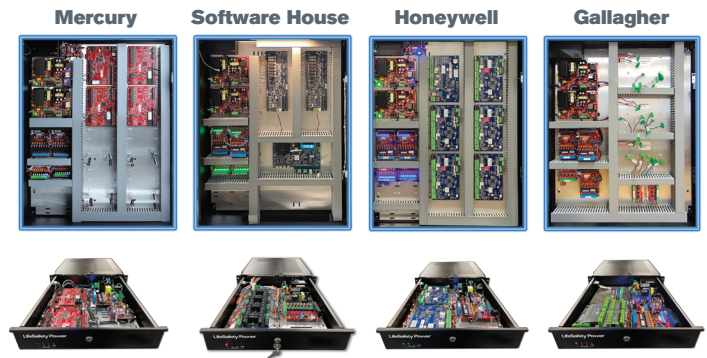
...to the building



...and down to the device



Unified Power Integrated Access Power Solutions.



The Power of ONE

FlexPower Unified Power Solutions® are award-winning power management systems that bring access hardware, system power, lock power and optional network management modules together in a single, optimized wall enclosure.

FlexPower Unified Systems integrate directly to the controller products of leading access manufacturers, offering substantial savings in installation time and labor.

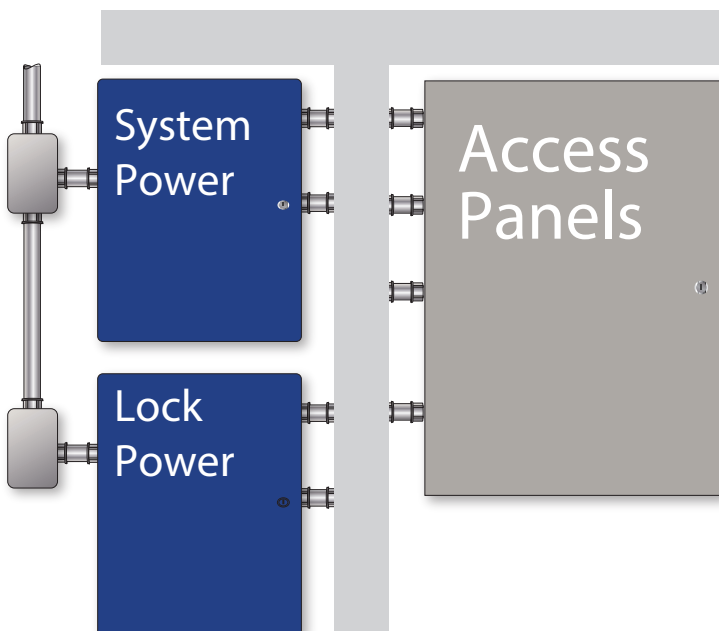
Pre-engineered - FlexPower products are designed in partnership with industry leading access manufacturers including Mercury Security, AMAG, Software House, HID, Honeywell, Brivo and Paxton.

Seamless design - All units feature the mechanical integration of lock and system power, alongside access panel hardware into a single, UL-listed, access power management system.

Labor savings - A single enclosure with one AC drop, removable back plate and a flexible mix-and-match mounting pattern significantly reduces field installation times and errors.

Innovative architecture - The system's unique dual-buss structure distributes 12 and 24VDC to all accessory modules with bi-color LED voltage indicators, so system and lock power are always available on a user-select basis.

Traditional Access Power



ProWire Pre-wired Access Power Solutions.



Prepared, Precise, PRE-WIRED

ProWire Unified Power solutions simplify and standardize access installations across an enterprise. Available standard, or networked for intelligent power monitoring, all ProWire systems feature quick-connect terminal strips for rapid, reliable installation; significantly reducing installation costs and errors.

ProWire systems streamline installation, operation, maintenance, and troubleshooting. Precision factory wiring of system power, lock relay power, system faults and panel communication are 100-percent factory pre-wired and tested. Preconfigured models are available in four-, eight- and sixteen-door combinations.

Enterprise-wide Standardization



Installation and service efficiencies

- One AC drop reduces installation costs
- Removable back plate simplifies access panel wiring and minimizes installation time and labor costs
- Deep enclosures accommodate large battery sets

Pre-wired power section saves installation time

- 120 or 230VAC input with safe AC disconnect circuit breaker switch

Custom mounting access back plate

- Enclosure options support four, eight, or sixteen door access control systems with dual voltage and remote networking

HELIX™

**Always-on, ready,
and reliable power**
for critical infrastructure protection

- ▶ Redundant AC and DC backup power
- ▶ Critical infrastructure protection for data centers, defense, finance, utilities
- ▶ Wallmount or rackmount configurations with integrated access controller options



DC Assurance

HELIX ATS PDU

- ▶ Rackmount Automatic Transfer Switch with Integrated Redundant AC Power Distribution
- ▶ Dual AC Branch Circuit Input
- ▶ 8 Managed AC Outputs
- ▶ UL294 Listed for Access Control



GEMINI™

Integrated access power drawers.

 Mercury Software House



Honeywell



- ▶ UL listed all-in-one access power systems
- ▶ System power, lock power, 12 & 24 VDC
- ▶ Standard, managed, pre-wired



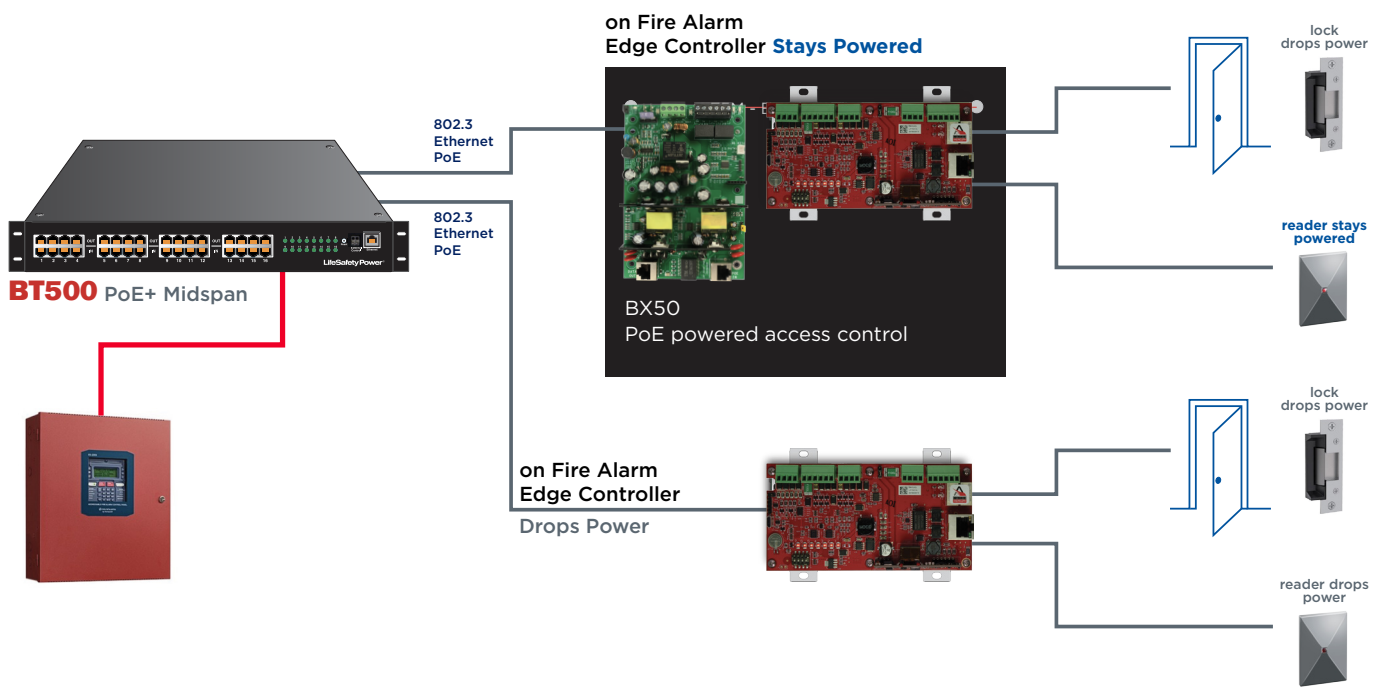
4DR Rackmount

8DR Rackmount



BITSTREAM™ PoE+ Switch & Midspan Solutions.

- UL294 PoE Solutions | 90W 802.3BT
- Battery backup for PoE enabled edge controllers

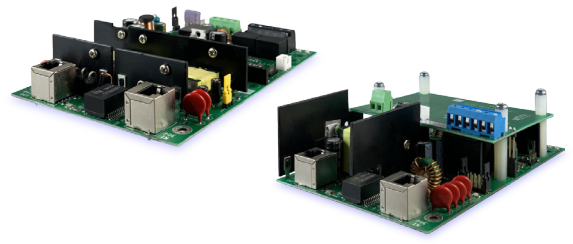


BT500 PoE+ Switch | BT500 PoE+ Midspan



BX50 50W PSU | BX75 75W PSU

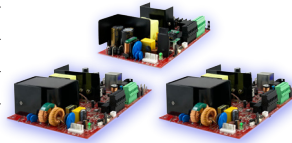
BX access control power supplies convert PoE to 12 and 24VDC power for use in access control, surveillance, or other applications.



Award Winning Power Supplies

Model Number	12VDC	24VDC	Total Power
FP075	6A	3A	75 Watts
FP0150	12A	6A	150 Watts
FP0250	20A	10A	250 Watts
B100	Secondary voltage power supply 5–18VDC output @4A max, class 2 power limited		

Industry Leading Features



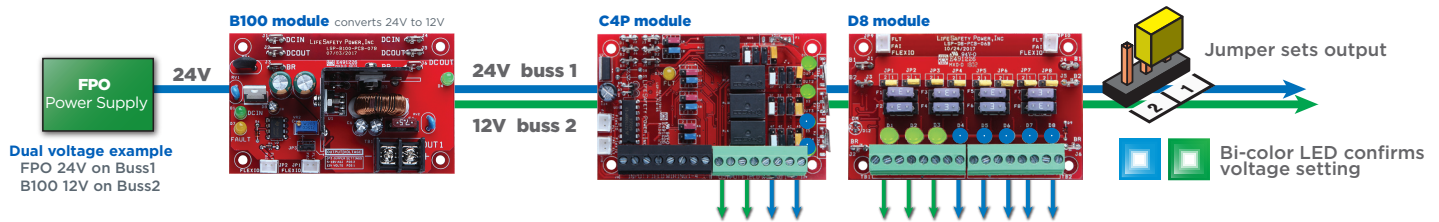
- US/Canada UL294/UL603 | CE compliant
- 110 / 208 / 230 VAC operation
- Switched and resettable outputs
- Intelligent battery charging and monitoring
- Complete fault supervision
- Thermal overload protection
- **Network ready | Lifetime Warranty**

Smart Management Modules

Applications

NL4, NLX	Network modules: 4 port, 8 port with RS485	remotely monitor PSU, remote battery test, cycle output, generate email / SNMP fault alerts
M8	8 managed relay lock outputs	manage, monitor, and control 8 inputs, 8 relay controlled outputs, user programmable fault limits
SD4, SD16	4, 16 managed auxiliary outputs	manage, monitor and remote reset auxiliary outputs, user programmable fault limits

FlexPower Distribution Modules - Unique Dual Buss Architecture



Lock Control Modules - Dual buss Distribution

Applications

C4	4 lock outputs	access control / 4 locks, field programmable
C8	8 lock outputs	access control / 8 locks, field programmable
F8	8 fire drop outputs	auxiliary power or fire drop per output with failsafe, failsecure select, field programmable

For Class 2 power limited version order C4P, C8P, F8P

Auxiliary Output Modules - Dual buss Distribution

Features

D8	8 DC outputs	auxiliary power or fire drop select per output, 12 or 24V DC per output (in dual voltage systems)
A8	8 AC outputs	24 or 28V AC select per output, field programmable

For Class 2 power limited version order D8P, A8P

Traditional Enclosures

H x W x D

Description

E1	14 x 12 x 4.5 in.	good for single voltage with <i>some</i> room for accessory modules
E2	20 x 16 x 4.5 in.	good for single/dual voltage with <i>more</i> room for accessory modules
E4	24 x 20 x 6.5 in.	good for single/dual voltage with <i>most</i> room for accessory modules
E5	8.5 x 11 x 3.0 in.	good for single voltage with <i>least</i> room for accessory modules

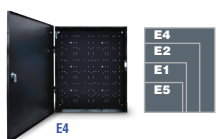
Unified Power Enclosures / Backplates

H x W x D

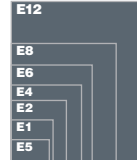
Backplate integrates power modules and controller from the following access companies

E5 M	8.5 x 11 x 3.0 in.	1DR Mercury PoE controller
E1 M/V	14 x 12 x 4.5 in.	1-2DR Mercury, Vertx/Aero
E2 K/H/M/P/S/V/X E2M1	20 x 16 x 4.5 in.	2-4DR Kantech, Honeywell, Mercury, Paxton, Software House, Vertx/Aero, AXIS
E4 A/B/G/H/I/K/M/OP/P/S/V/X/ZK	24 x 20 x 6.5 in.	6DR Paxton 4-12DR Honeywell, ZKTeco 8DR Amag, Brivo, Gallagher, Identiv, Kantech, Mercury, Openpath, Software House, Vertx/Aero, AXIS
E4x1 H1/M1/V1	24 x 20 x 6.5 in.	12DR Honeywell 8-16DR Mercury, Vertx/Aero
E6 A/B/G/H/K/M/N/OP/P/SP/S/V/ZK E6x1 A1/M1/S1	30 x 23 x 6.5 in.	8-16DR Amag, Brivo, Gallagher, Honeywell, Kantech, Mercury, Napco, Openpath, Paxton, Siemens, Software House, Vertx/Aero, ZKTeco
E8 A/B/G/H/M/P/SP/S/V	36 x 30 x 6.5 in.	12DR Honeywell, Mercury 16DR Amag, Brivo, Gallagher, Napco, Paxton, Siemens, SWH, Vertx/Aero
E8x1 B1/H1/M1	36 x 30 x 6.5 in.	12-16DR Brivo, Honeywell, Mercury
E8 M2	36 x 30 x 6.5 in.	16DR Mercury
E12 H/ M/S	48 x 36 x 8.0 in.	24DR Honeywell, Mercury 32DR Software House

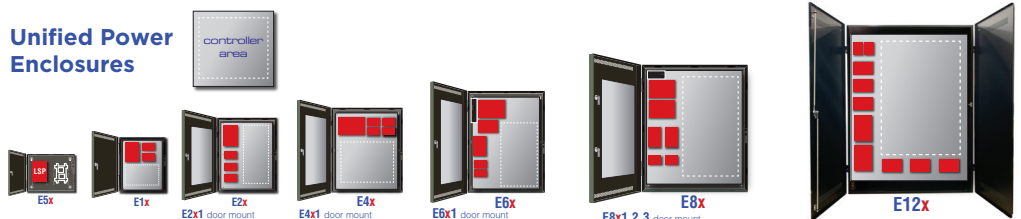
Traditional Enclosures



Relative Enclosure Sizes



Unified Power Enclosures





Corporate Headquarters
LifeSafety Power
Phoenix, AZ USA

224-324-4240 Main
888-577-2898 Toll Free
info1@lifesafetypower.com
www.lifesafetypower.com