

Overview

KISI Unified Power Systems combine FlexPower® power modules alongside KISI controller modules in one compact and secure UL Listed solution.

This unit is a 12V and 24V DC dual voltage access power system.

Dual C8 lock control modules provide sixteen access control inputs capable of voltage or dry contact activation, and sixteen outputs programmable for failsafe / fail-secure operation at either 12 or 24 VDC and controlled by the integrated fire alarm interface circuit on the FPO. Dual D8 modules provides sixteen auxiliary outputs and each output is configurable for 12 or 24VDC operation.

KISI access enclosures are painted steel with one removable KISI module backplate and include lock, two (2) keys and tamper switch.

System Features

- ◆ **FPO offline power supply**
 - 120 or 230 VAC input
 - 12 and 24 VDC outputs
 - On board Fire Alarm Interface
 - Continuous and resettable DC
- ◆ **Distributed outputs**
 - Sixteen auxiliary - fused at 3A each
 - Sixteen lock control - fused at 3A each
- ◆ **Expansion options**
 - Increased power, multiple voltages
 - Additional distribution outputs
 - Network monitoring and reporting
- ◆ **Lifetime Warranty**

Enclosure Features

- ◆ **Labor saving design**
 - Pre-wired power section
 - Pre-punched knockouts
 - Preinstalled brackets hold four KISI modules
 - Flexible backplate mounting locations
 - Access panels mount on threaded studs - no drilling required
- ◆ **Additional benefits**
 - Wire management room
 - 6.5" enclosure depth fits battery set
 - Tamper switch, lock, dual key set standard
 - Mounting hardware for access boards included



Ordering

FPO150/250-2C82D8E8-4KZ1

Description

400W (12V & 24V) 16 lock/aux outputs, holds 4 KISI controllers



Specifications

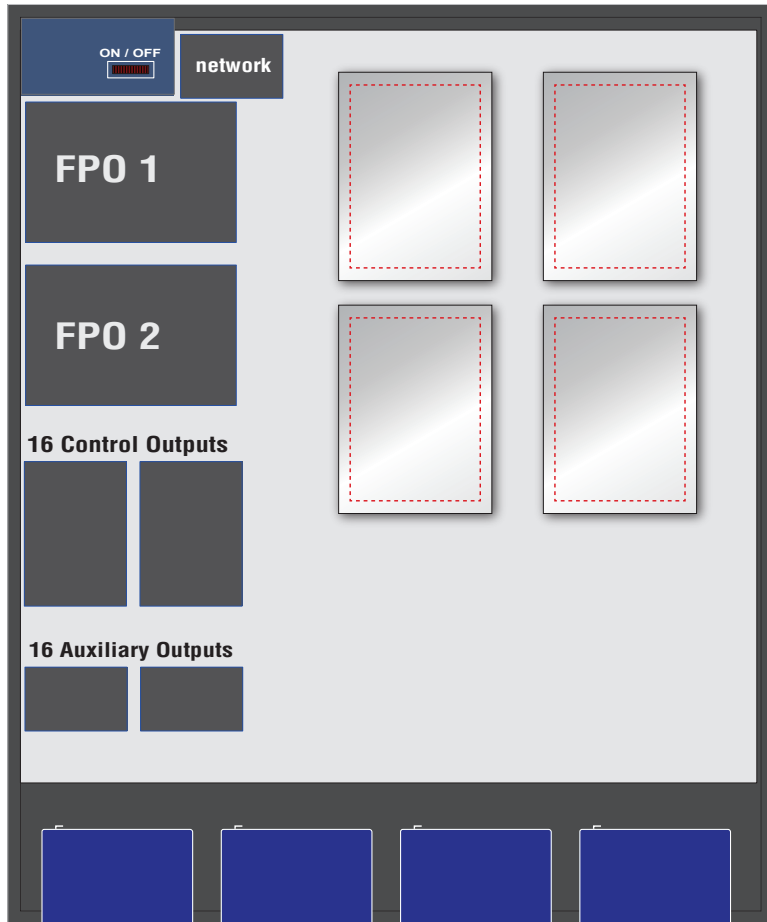
Input Power	Input 120/230 VAC 50/60 Hz 452 Watts Overload and short circuit protection Over temperature protection Polarized AC power supply disconnect
Output Power	FPO150: 12V/12A or 24V/6A 150 Watts FPO250: 12V/20A or 24V/10A 250 Watts Outputs: Continuous (DC1) Resettable (DC2) 16 lock control outputs fused at 3A per output 16 auxiliary outputs fused at 3A per output 120 mV output voltage ripple System Efficiency: 87% System BTU Rating: 175 BTU/Hr
Battery Charging	Independent built-in 2A charger for sealed lead acid or gel type batteries Microprocessor dual rate charging of 12 or 24 V battery sets Charges up to 80Ah battery sets within UL limit Automatic switchover to standby battery when AC fails Zero voltage drop when switched over to battery backup
Supervision	AC Fail (form "C" contacts) System Fault (form "C" contacts) may be triggered by low/no battery, short to earth ground, power supply failure or blown fuse
Visual Indicators	AC input, DC1 and DC2 output System fault / AC fault Short to earth ground Reverse battery polarity Fire Alarm Input activated C8: DC input / output and Fault D8: DC outputs
Regulatory Compliance	UL294, UL603, UL1076, ULC S318, ULC S319
Mercury/LSP	CSA C22.2 #107.1, CSA 22.2 #60950
Joint Listing	CSFM / FCC Part 15, Subpart B CE
Enclosure Dimensions	Size: 36.00H x 30.00W x 6.50D in. (91.00 x 76.00 x 16.50 cm) Weight: 80 lbs.
Access Panel Mounting	Four (4) pre-installed KISI controller brackets

E8 KISI Mounting Guide

KISI	Modules per bracket	Brackets per Enclosure	Total Modules
Pro 1.1	1	4	4

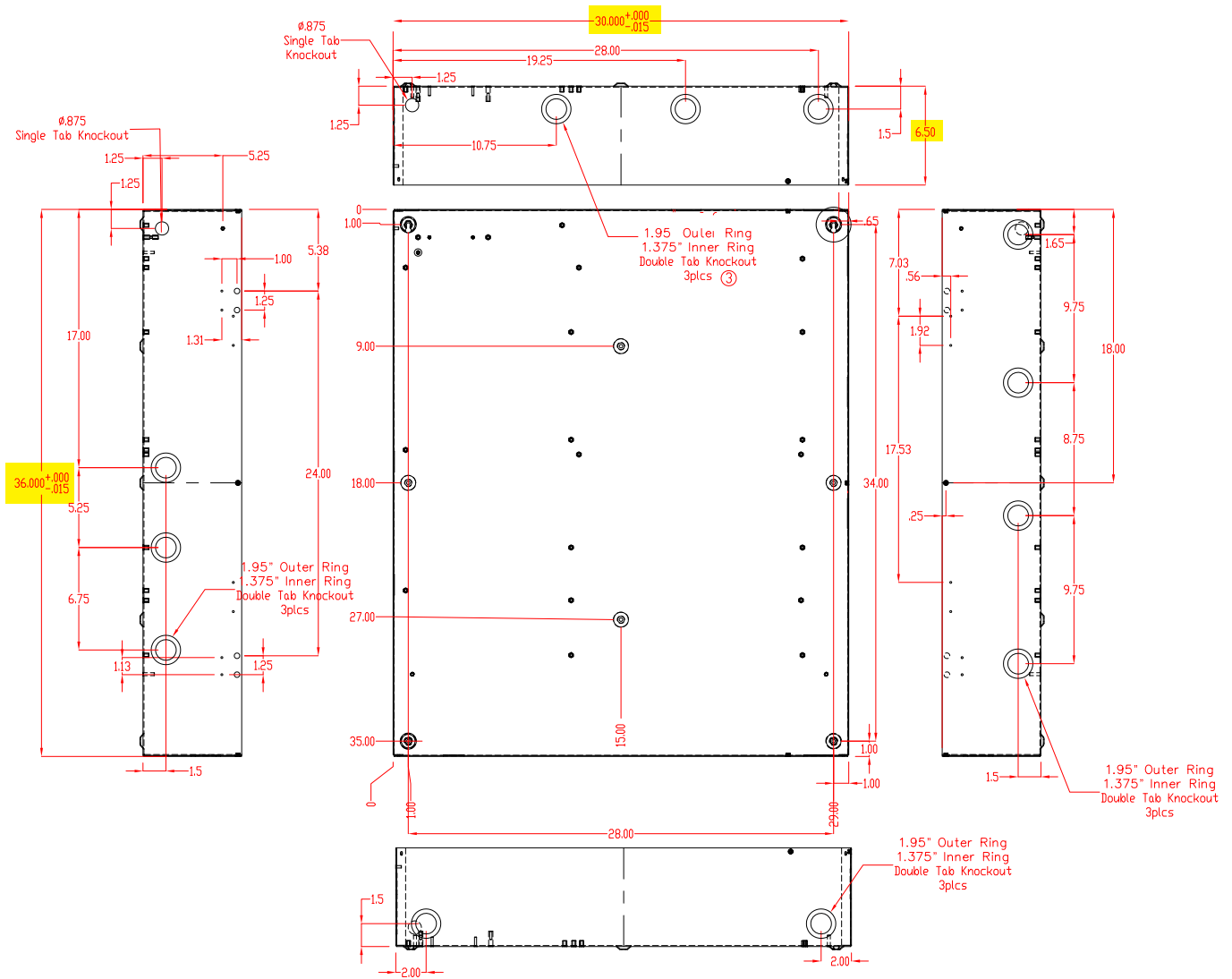
Enclosure Features

- ◆ **Custom KISI Backplate**
 - LSP power modules pre-wired
 - Four brackets - mount four (4) KISI controllers
- ◆ **E8 Enclosure**
 - Protected AC cover with on/off circuit breaker for maintenance safety
 - Pre-drilled mounting holes for field upgrades
 - 6.5" cabinet depth accommodates large battery sets
 - Removable door with "fast disconnect" ground strap
 - Multiple knockouts all four sides



E8 Enclosure Dimensions (H x W x D)

36.00" x 30.00" x 6.50" (91 x 76 x 16.5 cm)



LifeSafetyPower.com

(888) 577-2898
 info@lifesafetypower.com

Specifications subject to change without notice.

© 2022 LifeSafety Power. All rights reserved. LifeSafety Power and FlexPower are registered trademarks of LifeSafety Power. This literature is for guidance only. It does not constitute recommendations, representation, or advice, nor is it part of any contract. Our policy is one of continuous product improvement, and the right is reserved to modify the specifications contained herein without notice.

P01-968A 06/22

LifeSafety Power
 10027 S. 51st Street, Suite 102
 Phoenix, AZ 85044 USA

