

VANTAGE™



PN ORDERING

FPV104-R8PE1 Class II Power Limited Outputs

FPV104-R8E1 Fused Outputs

For CE model add "-E" to end of model number (i.e. FPV104-R8E1-E)

FEATURES

Fire Alarm Disconnect

- Latching or non-latching, is individually selectable for each output

Fire Alarm Disconnect input options

- Normally open, normally closed, open collector sink, positive or negative voltage application, NAC loop, short circuit and thermal overload protection

Battery Backup

- Built in fast charger at 1.5A current
- Autoswitch to battery with zero voltage drop
- Low power cutoff to prevent battery deep discharge
- Reverse battery protection

Visual Indicators

- FPV - Green LEDs for AC input and DC output status. Red LED shows FAI triggered
- R8 - Red LED relay active. OutSmart BiColor LED shows output Voltage (Green/12V, Blue/24V)

Agency Approvals

- UL294, UL603, UL1076
- ULC S318, S319, CSA C22.2#107.1, CSA 22.2 #60950
- ROHS Leadfree | CE Approved

FLEXPOWER VANTAGE POWER SUPPLY OVERVIEW

FPV smart power supply/chargers offer unique performance and value with these standard features:

- **Built in Fire Alarm disconnect** on a per output basis
- **Low battery cutoff** protects batteries from deep discharge
- **Dedicated fast charger** prolongs battery life
- **Enhanced surge immunity** for input/output protection
- **Locksafe™** tight regulation provides longterm lock protection
- **OutSmart™** Bicolor output LED (12V/Green, 24V/Blue)
- **Dual outputs** main and auxiliary rated 1.5A continuous
- **Network ready** with optional Netlink™ module
 - Monitor ac line voltage & other parameters in NetLink dashboard
 - Remote test batteries
- **Lifetime Warranty** LifeSafety Power's quality commitment

SYSTEM SPECIFICATIONS

Input

- 120VAC or 208/230VAC, 50/60Hz
- 5.70 Amps maximum

Outputs

- 10A @ 12V
- Main output continuous
- Auxiliary 1.5 Amp output Class II power limited
- Overload & short circuit protection with auto-restart

Supervision

- AC fail, Battery fail, System fault (form "C")
- Low power shutdown when battery voltage too low

POWER DISTRIBUTION

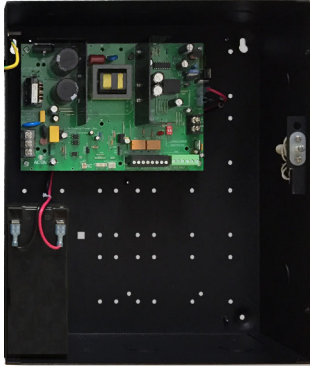
Eight Access Control System Outputs:

- Normally Open or Open Collector Input
- Programmable failsafe or failsecure Outputs
- Form "C" 5 Amp relay contacts
- Output ratings:
 - (R8P) 2.5A power limited
 - (R8) 3A fused

ELECTRICAL RATINGS

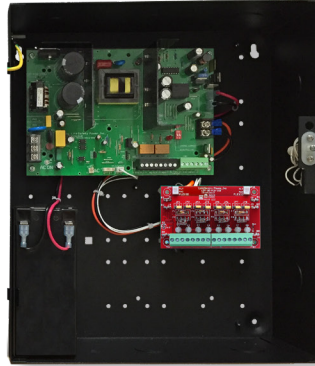
Parameter	Rating
Input Voltage	120/208/230 VAC, 50/60Hz
Input Current (max)	5.70 Amps
Main Output	10Amps @ 24V
Aux Output	1.5A Class II Power Limited
Maximum Charge Current	1.50 Amps
Low Power Disconnect	at 70% of battery voltage
System BTU/Hr	92
Operating Temperature	-4 to +122F (-20 to +50C)
Efficiency	91% 120VAC 60Hz In, Full Load
Enclosure	14H" x 12W" x 4.5D" 15.50lbs (7kg)

Other FPV104 configurations



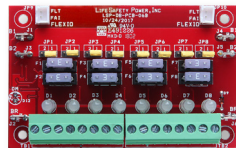
FPV104-E1 (Standard Power)

- Network ready power supply/charger
- Locksafe™ regulated lock output voltage
- Dedicated fast charger / Low battery cutoff
- Output select: continuous or failsafe on fire alarm
- Auxiliary output 1.5A class 2 power limited
- Enclosure compatible with LSP accessory modules
- Lockset standard, tamper switch option

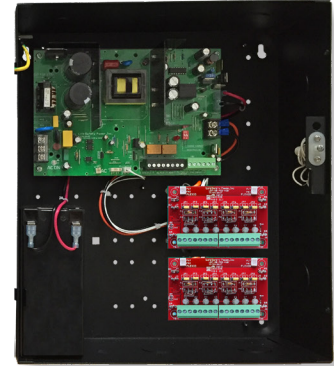


FPV104-D8E1 (8 Aux Outputs)

- All FPV standard power features plus:
- 8 (D8) auxiliary outputs

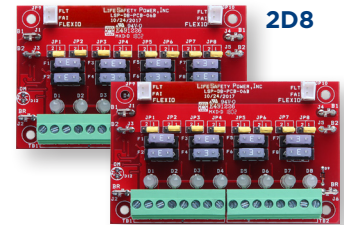


D8



FPV104-2D8E1 (16 Aux Outputs)

- All FPV standard power features plus:
- 16 (2D8) auxiliary outputs

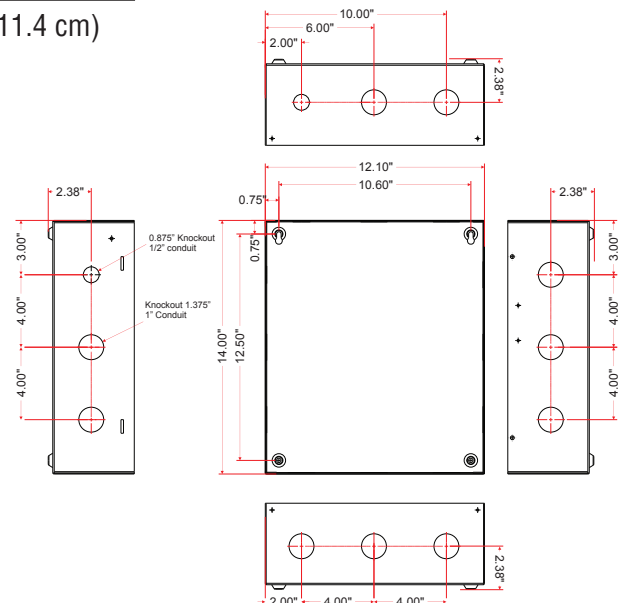


2D8

ENCLOSURE DIMENSIONS

14"H x 12"W x 4.5"D (35.6 x 30.5 x 11.4 cm)

- Includes lock set
- For tamper switch, order pn: A05-304



LifeSafetyPower.com

(888) 577-2898
 info@lifesafetypower.com

Specifications subject to change without notice.

© 2022 LifeSafety Power. All rights reserved. LifeSafety Power, NetLink, Vantage are trademarks of LifeSafety Power. All other trademarks and copyrights are the property of their respective owners.

P01-841A 07/22

LifeSafety Power
 10027 S. 51st Street, Suite 102
 Phoenix, AZ 85044 USA