

Overview

NL4 is a four data port that communicates and controls power status over a local or wide area network. The NL4 provides four SPI ports for connection to FlexPower devices that enables monitoring and control of the power system. Typical data gathered and reported includes operational fault status, power supply output voltage, battery charging voltage, battery charging current, and fire alarm input status. The NL4 is part of the LifeSafetyPower NetLink® technology suite enabling Managed Power Solutions for FlexPower systems.

Automated reports may be generated on any detected fault condition, battery aging, fire alarm interface activation, and event activation, or on a time base for scheduled confirmation of proper operation. A time and date stamped log of the past 1000 events is kept as history in a buffer and may be accessed as a scheduled report, or immediately on an alert or occurrence. The buffer is updated once per hour with all parameters in normal range.

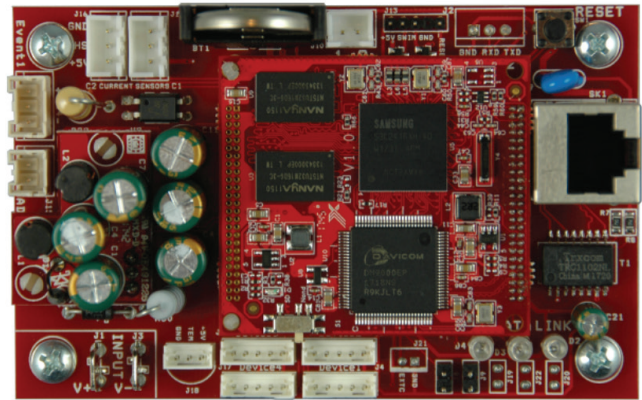
In addition to four SPI connections, the NL4 provides two current sensor inputs, a remote temperature sensor input, a volt meter input, and a contact monitor input. The current, voltage, and temperature sensors may be given upper and lower limits to trigger an alert if the measured value goes out of range. The contact monitor input may be programmed to respond to either a normally open or normally closed contact or voltage presence or loss. Two outputs are also provided for use in power cycling external equipment with RB relay modules or interfacing to the C4, C8, or M8 modules.

Specifications

Electrical Ratings	Specification
Input Operating Voltage	8–30VDC
Input Operating Current	60 mA nominal
Network Data Rate	10/100 Mbps
Current Measurement Range	0–30VDC $\pm 3\%$ (10–30V)
Voltage Measurement Range	0–20A $\pm 0.1A$ +5% of reading
Event Input	8–30VDC
Output 1, 2 Max Sink Current	50 mA



FLEXPOWER
UNIFIED POWER SOLUTIONS



Features

Monitoring and Reporting

- System Integrity
- Battery Health
- Output Condition
- 1000 Event Buffer

Remote Diagnostics and Service Features

- Monitor health and status of host power supply, battery set, and up to 24 individual outputs (requires M8 module)
- Auto-schedule, test, and report battery standby time
- Remote supervision of battery's state of charge
- Monitoring internal cabinet temperature
- Monitoring external room temperature with over temp alert
- Remote power cycling control of external equipment
- Time/Date stamp log reports last 1000 events

Email or SNMP Notification

- AC and system fault conditions
- Aging or drained battery, not meeting standby specification
- Fire Alarm Interface (FAI) activation
- External room temperature outside preset limit
- External Event activation
- Output condition (requires M8 module)
 - Over voltage or over current | voltage loss | output power cycled

SNMP Set and Trap Notification

- Version 1, 2, or 3

Hardened Cybersecurity

- Encrypted password, user and certificate logging

Lifetime Warranty

Ordering

Model	Output	Dimensions	Weight
NL4	4 Port Network Module	4"H x 2.5"W x 1.5"D	.25 lb

Provided with cables and mounting hardware.

Agency Listings

Domestic and International Certifications
UL294, UL1076, UL603, ULC S318, ULC S319, CSA C22.2 #205

Managed Power Features

These Managed Power Features are enabled in the NetLink dashboard when using any NetLink module with other managed products.

Monitoring Parameters

- Power Supply Output Voltage
- AC Input Measurement and Fault Status
- System Fault Status
- Fire Alarm Input Status
- Battery Voltage and Charge Current
- Battery Age
- External Room Temperature
- Total Number of System Faults
- Total Number of AC Faults
- DC Load Current (system or battery)
- DC Output Voltage (system and battery)
- Tamper Switch (or other contact monitoring)

Programmable Functions

- AC Fault Delay
- System Fault Delay
- System Install Date
- Reset Fault Counters
- Optimal Battery Charge Current
- Reset Battery Age Counter
- Battery Replacement Period
- Temperature, Current, Voltage Trigger Parameters

Control Functions

- Output 1 (on or off)
- Output 2 (on or off)

Event-triggered Email Alerts and Reports

- AC or System Fault
- FAI Activation
- Low Battery Voltage
- Low Measured Battery Standby Time
- General System Status Report
- Scheduled System Service Due
- Battery Replacement Due
- External Temperature Sensor
- Tamper Switch Activation

Test Functions

- Battery Run Time Capacity
- Battery State of Charge

NetLink Browser Home Screen

Network Dashboard

- Internal/External Temperature Sensors
- Current Sensor Reading
- Voltage Sensor Reading
- Event Activation Condition
- Service Due Report
- System Fault Log Report
- Device On/Off Control

Netlink Connected Devices

- Two power supplies and 16 managed outputs
- One power supply and 24 managed outputs
- Visual status of device condition

Report Screen

- Set up screen
- What to report, when to report

Configure Screen

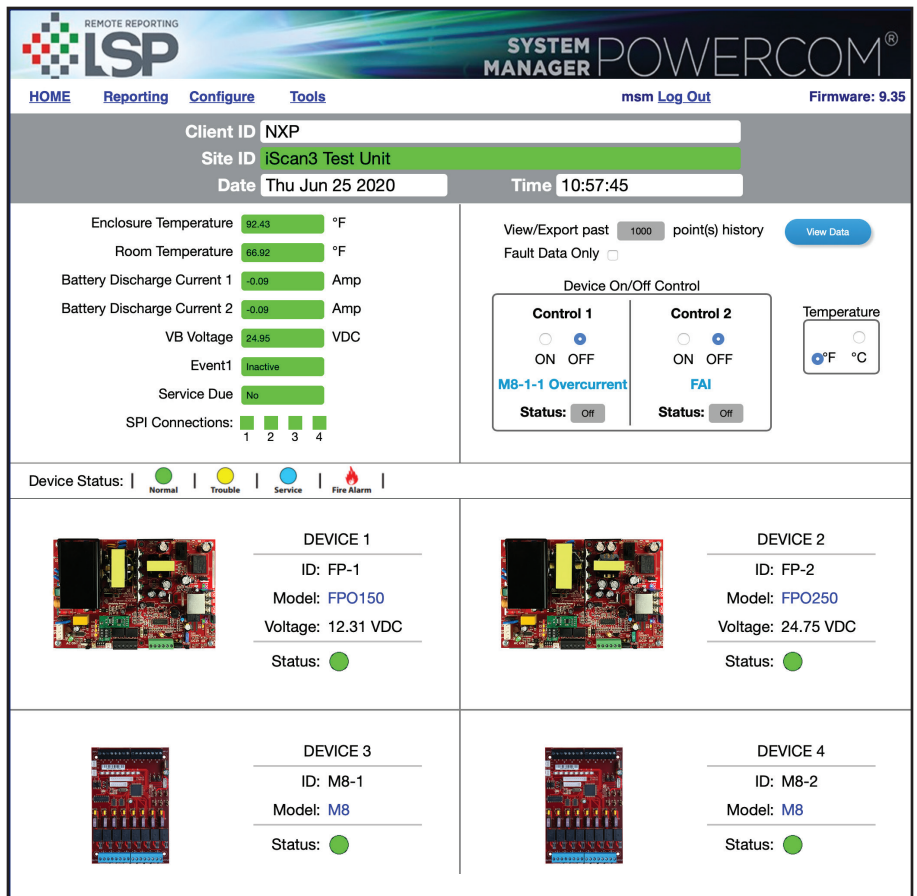
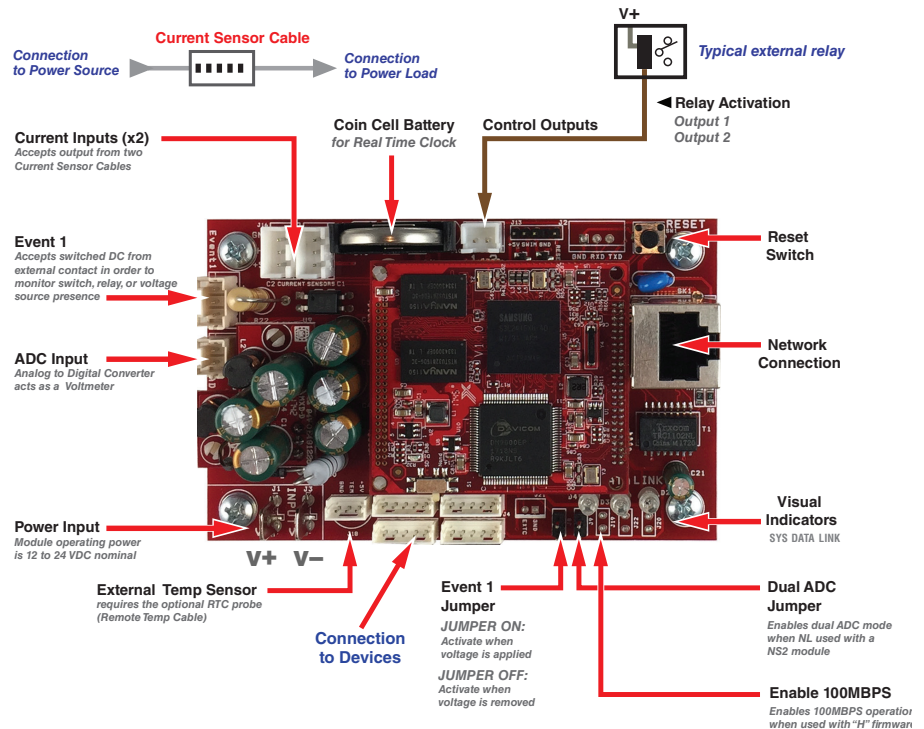
- Network, email, SNMP settings
- Current sensor calibration
- Battery life/capacity setting
- User login and activity logs

Power Supply Screen

- Set FPO battery charge current
- Set fault report delays
- Reset timer for new battery install
- Reset fault counters

Tools Screen

- Upgrade software
- System reboot





(888) 577-2898 | techsupport@LifeSafetyPower.com